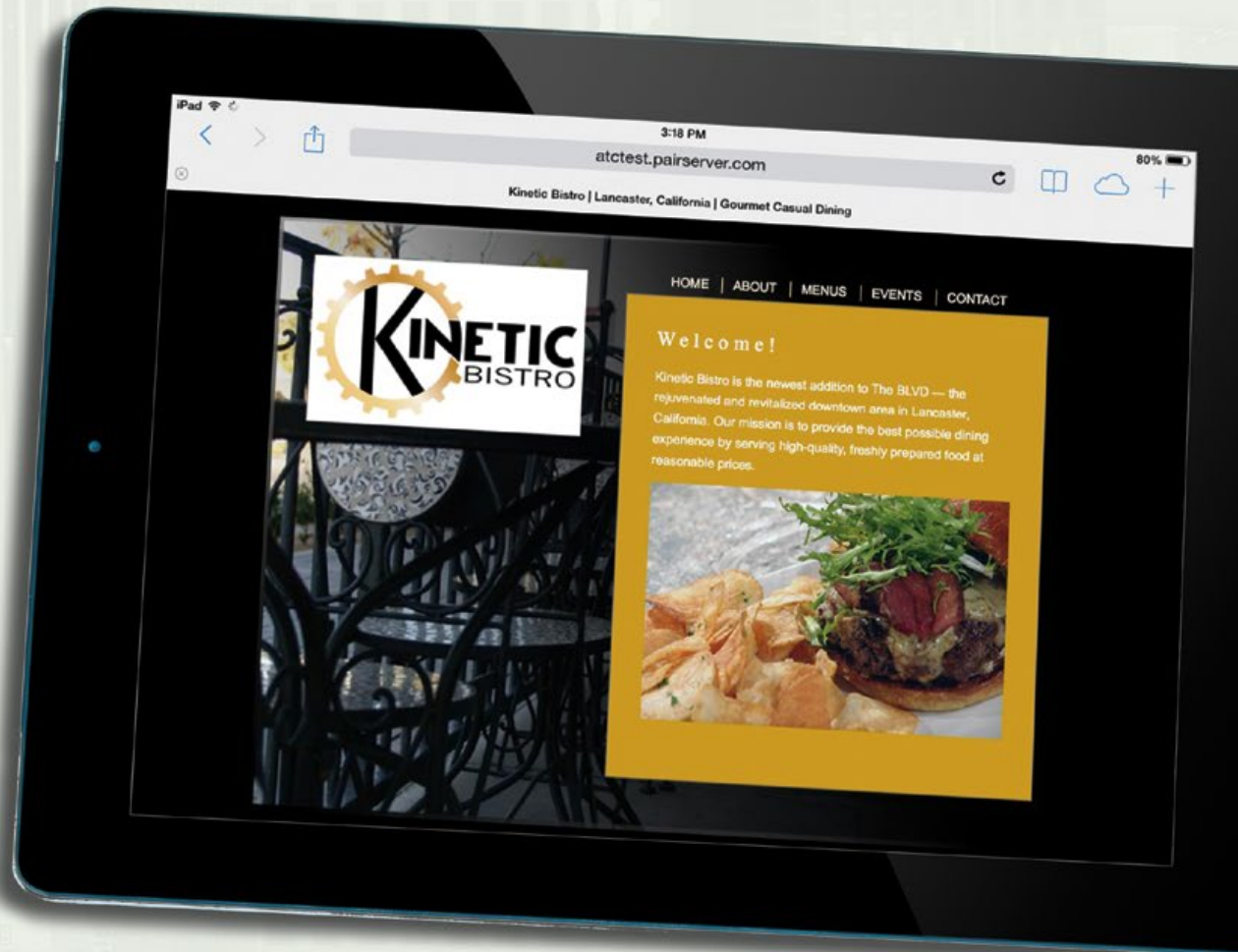


Bistro Site Organization

Your client has opened a new restaurant in a fast-growing community in Southern California. He has already designed the pages for his site, but has hired you to make sure everything works properly and then make the site available to the browsing public.

This project incorporates the following skills:

- Creating, exporting, and removing site definitions in Dreamweaver
- Moving files around in a site root folder
- Creating relative links between pages in a site
- Defining absolute links to external sites and email addresses
- Improving search engine optimization (SEO) with file names and titles
- Cloaking site files from a Web server
- Uploading files to a Web server



Project Meeting

client comments

I already created the pages for our site, but I don't know what links to use, and I'm not sure how to create them. I've also heard that there are certain things you should do to improve a site's search engine rating — which is obviously important for a small business like mine.

art director comments

The more pages you add to a site, the more complex it becomes, until it's almost impossible to make sense of what you have and where it is located. Web sites — even those with only a few pages — should be designed with a good organizational plan, making it easier to modify pages later.

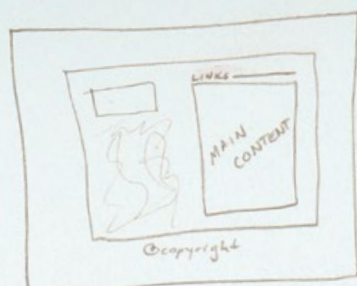
Once you have a handle on the organization, make sure the pages link to each other properly. Visitors get frustrated very quickly when they're forced to return to the home page every time they want to jump to a different set of pages.

The last thing you should do is add page titles and change file names to give a better indication of what's on each page. Doing so will make the site more accessible to people with screen-reader software, and it will also improve the site's ratings on search engines.

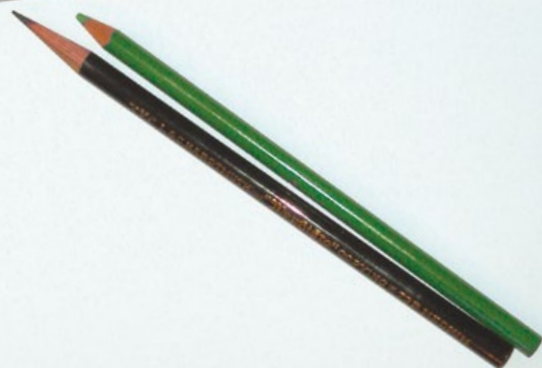
project objectives

To complete this project, you will:

- Create a Dreamweaver site definition
- Create new folders within the site root folder
- Use various methods to move files from one place to another within the site
- Create links between pages using several techniques available in Dreamweaver
- Differentiate between relative and absolute links
- Copy and paste links from one page to another
- Improve searchability and usability using page names and titles
- Cloak site files to hide them from the Web server
- Upload the site files to a server so they can be viewed online



1. Organize files
2. Create links
3. Upload site



Stage 1 Exploring Site Structure

When you start a new project that involves updating an existing site, your first task is to assess the file and folder structure. Doing so gives you a good idea of what the site contains.

A small site with only a few pages requires very little organization; in fact, you *can* place all of the files — Web pages and image files — in one folder (although even a small site benefits from a dedicated folder for images). Larger sites, however, require careful organization of file names, pages, and image files. A good site design with excellent organization speeds development now, and makes it much easier to update the site later.

CREATE A NEW SITE DEFINITION

Web sites are designed so all of the Web pages, image files, style sheets, and other resources are stored on your local drive in a base folder called the **root folder**. Other folders can be placed inside (below) the root folder to make it easier to manage and organize files.

1. Download **Kinetic_DWCC16_RF.zip** from the **Student Files Web page**.
2. Expand the ZIP archive in your WIP folder (Macintosh) or copy the archive contents into your WIP folder (Windows).

This results in a folder named **Kinetic**, which contains all the files you need to complete this project.

If necessary, refer to Page 10 of the Interface chapter for specific instructions on expanding or accessing the required resource files.

3. In Dreamweaver, set up your workspace so the **Files, Insert, and Properties panels are visible**.

It doesn't matter which saved workspace you start with. The primary tools you need for this project are the Files, Insert, and Properties panels. We have closed all other panels to maximize the available space in our screen shots.

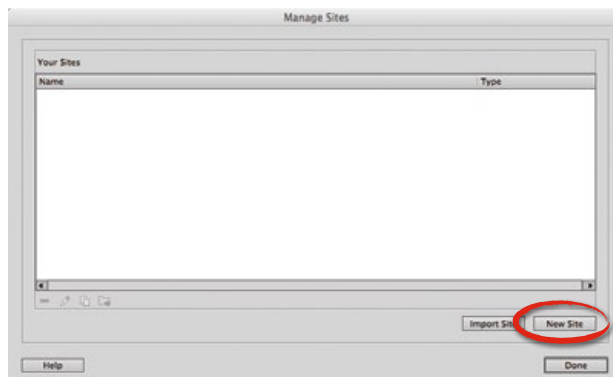
4. In the Files panel, click the **Manage Sites** link or open the **Directory** menu and choose **Manage Sites** from the bottom of the list.



Note:

When a site is defined in Dreamweaver, the Manage Sites link at the top of the Files panel is replaced by a menu that defaults to Local view.

5. Click the **New Site** button in the Manage Sites dialog box.



Note:

Ellipses in a menu or button name indicate that clicking will open a dialog box. We do not include the ellipses in our instructions.

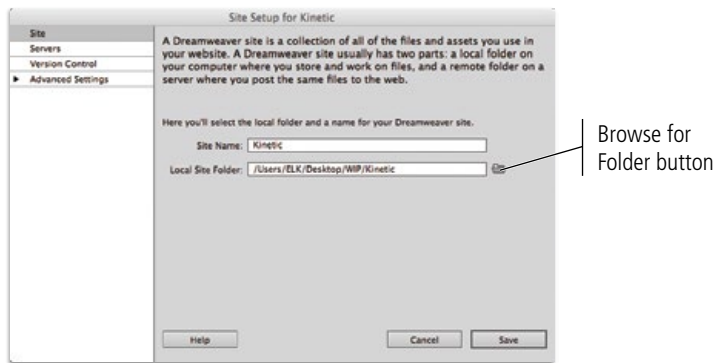
6. In the Site Setup dialog box, make sure Site is selected in the category list.

7. Type **Kinetic** in the Site Name field.

The site name can be anything that will allow you to easily recognize the project; it is only for identification within Dreamweaver. For example, you could use “Eve’s site” as the site name within Dreamweaver to describe the Web site (www.evelynsmith.biz) that you are creating for your friend.

8. Click the **Browse for Folder** button to the right of the **Local Site Folder** field. Navigate to the **WIP>Kinetic** folder and click **Choose/Select Folder** to return to the Site Setup dialog box.

Part of the process of defining a site within Dreamweaver is to specify a particular folder as the site root folder of the Web site. Clicking the Local Site Folder button opens a navigation dialog box where you can find the folder you want to use.

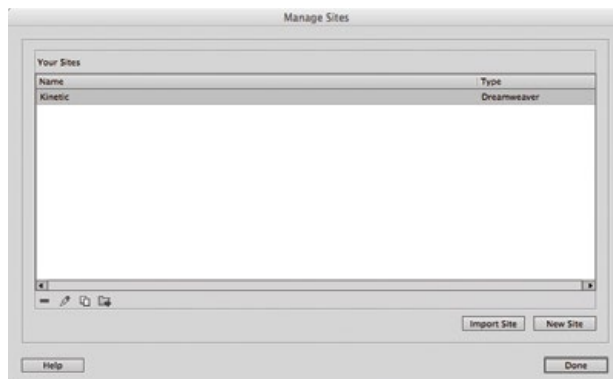


Note:

You will learn about other options in the Site Setup dialog box later in this book.

9. Click **Save** to close the Site Setup dialog box.

10. In the Manage Sites dialog box, make sure the **Kinetic** site appears in the list of sites, and then click **Done**.

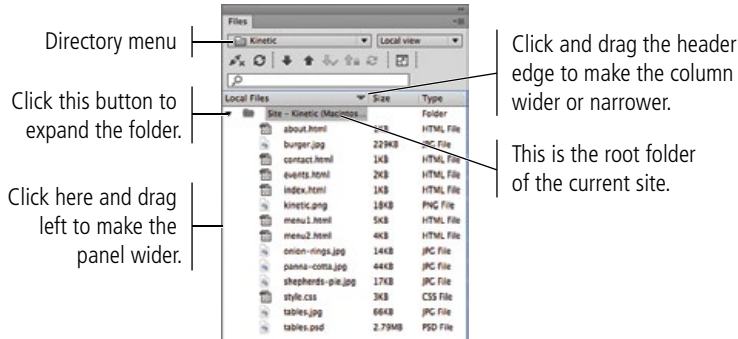


11. Continue to the next exercise.

EXAMINE THE SITE FILES

There are many files in the Kinetic site folder. The first step in organizing the files is to examine the Web page files and understand what they contain.

1. With Kinetic showing in the Directory menu of the Files panel, expand the site folder (if necessary) and examine the files in the site.



Note:

If more than one site is defined, you can switch between sites using the Directory menu of the Files panel.

2. Double-click `index.html` in the Files panel to open the file in Dreamweaver.

Using the options on the left side of the Document toolbar, close the Code pane (if necessary) and make the regular Design view active; the Live view should be turned off.

All of the pages in this site use the same basic design. The links at the top of each page need to navigate between the pages. The copyright information at the bottom (in the footer area) needs to navigate to the copyright owner's Web site, which is external to your client's site.

Click this button to show only the Design view.

Choose Design in this menu to show the regular Design view.

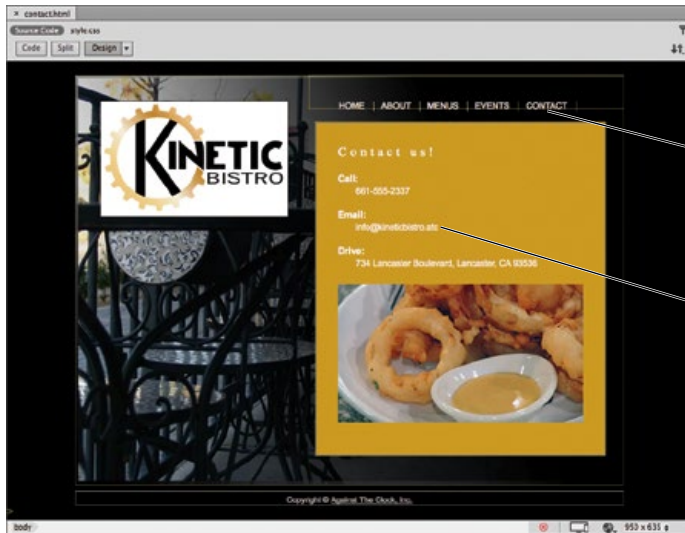


These words will be links, which will appear on every page in the site.

This should be a link to the copyright holder's Web site.

3. Close index.html, then open contact.html.

As you can see, this page uses the same basic design as the index page. The specific page content also includes an email link, which you need to define so that users can click the link to send your client an email message.



These links should be the same on every page in the site.

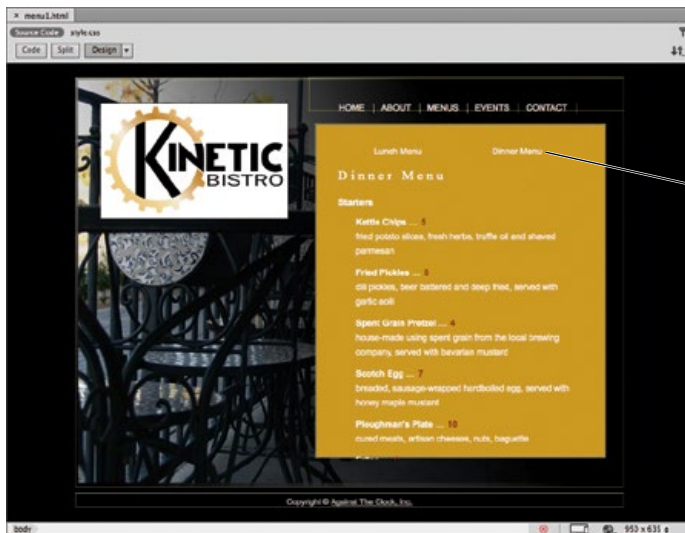
This should be an email link to your client's email address.

Note:

The layout for this site is based on the free "Creation" template from [www.templatemo.com](http://www.templateemo.com). Photos are by Charlie Essers.

4. Close contact.html, then open menu1.html.

Again, the page uses the same basic layout as the other pages in the site. The top area of this page's primary content indicates that there are actually two menus — Dinner and Lunch. As you can see in the Files panel, two separate menu files exist. You will use the two headings at the top of the page to create links to each menu.



These words should link to the relevant menu page.

5. Close menu1.html, then continue to the next exercise.

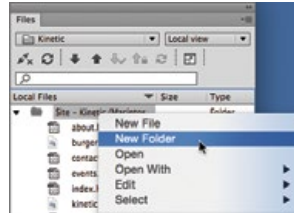
PLAN FOLDER ORGANIZATION

When all files are dumped into the main site folder, it can be challenging to manage your work. A well-organized site is an easy-to-manage site. Ideally, organization occurs before the site is constructed, but Dreamweaver makes it easy to reorganize files and folders at any point in the process.

There are no absolute rules to follow for organizing files and folders — other than the general principle of keeping related components together, so you know where to find certain files when you need them.

1. With the Kinetic site open in the Files panel, scroll to the top of the Files panel (if necessary). Control/right-click the site name and choose **New Folder** from the contextual menu.

The basic pages (home, about, contact, etc.) form the root of the site, and they should therefore appear within the root folder of the site. Other pages are better kept in folders that are named based on what they contain.



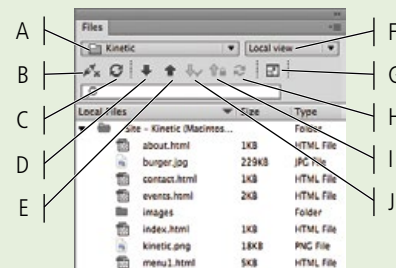
2. Type **resources** and press Return/Enter to apply the new folder name.

If the folder name remains untitled after pressing Return/Enter, Control/right-click the untitled folder, choose Edit>Rename in the contextual menu (or press the F2 key), and retype the new folder name.

The Files Panel in Depth

By default, the Files panel displays the site files on your local computer. The top of the Files panel also includes buttons that allow you to manage the files in your site:

- A The **Directory menu** includes a list of available drives, sites that have been defined in Dreamweaver, and a link to the Manage Sites dialog box.
- B **Connect to Remote Server** establishes a connection with the remote server (if you defined one). Otherwise, clicking this button opens the Site Definition dialog box.
- C **Refresh** refreshes the file list that displays in the panel.
- D **Get Files from Remote Server** copies the selected files from a remote server to the local folder. If the Enable Check In and Check Out Files option is active, the copied files are available on the local site in read-only mode, which means you can't modify them. You must click the Check Out Files button to edit the files.
- E **Put Files to Remote Server** copies the selected files from the local folder to the remote server. If a new file is added to the server, and if the Enable Check In and Check Out File option is active, the file's status is Checked Out.
- F Use the **View menu** to view the files on the remote or testing servers by choosing the appropriate option from the View menu.



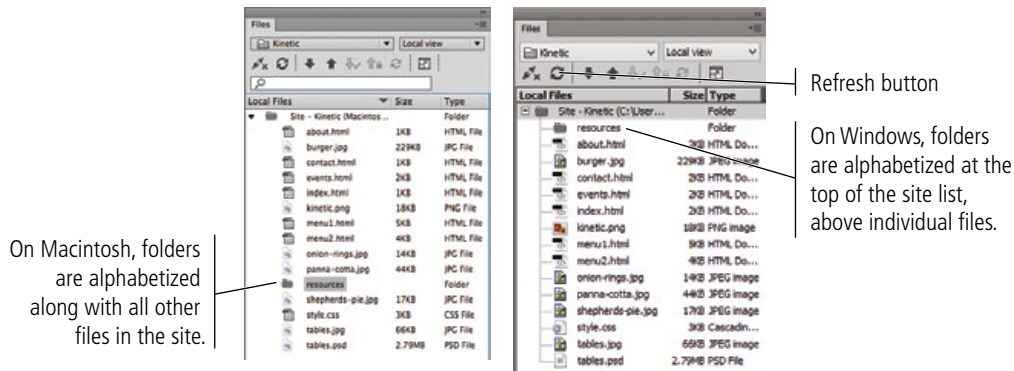
- G **Expand** shows both local files and the remote site (if one has been defined). The expanded Files panel has two panes; one displays the files on the remote or test server and one displays the local site files.
- H **Synchronize with Remote Server** synchronizes files between the local folder and remote server so the same version appears in both places.
- I **Check In** copies the selected files from the local folder to the remote server and makes the copied files read-only in the local folder. To edit these files, you need to select them and click the Check Out Files button.
- J **Check Out Files** copies the selected files from the remote server to the local folder and locks the files, so only the user who checked out those files can edit them.

3. Click the Refresh button in the Files panel.

When the Files panel is sorted by name, folders on Macintosh are alphabetized along with all other files and folders after refreshing the file list; on Windows, folders are moved to and alphabetized at the top of the list, above individual files.

Note:

Press F5 to refresh the file list in the Files panel.



4. Control/right-click the main site folder again and choose New Folder from the contextual menu.

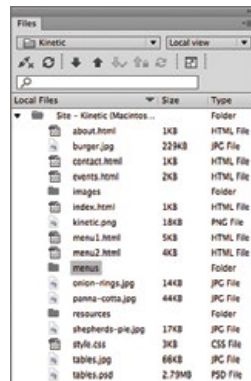
You want another folder at the same level as the resources folder — in the main level of the site root — so you first have to use the contextual menu for the site root folder.

5. Type **images** and press Return/Enter to apply the new folder name.

Web design convention dictates image files be placed in a folder named “images” for easier organization. If you have many photos in various categories, you might want to create additional nested folders inside the main images folder.

6. Repeat Steps 4–5 to create another new folder named **menus** in the site root folder.

7. Refresh the list in the Files panel.



Note:

You can create a new folder inside an existing folder (called nesting) by Control/right-clicking the existing folder — instead of the root folder — and choosing New Folder from the contextual menu.

8. Continue to the next exercise.

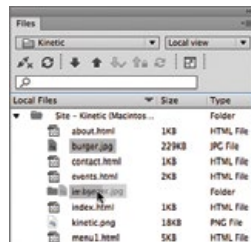
SORT AND MOVE IMAGE FILES

When you define a site in Dreamweaver, the application reads all of the pages in the site (a process that can take a few minutes in a large site), notes the links between pages, and identifies which images are used in which pages. These associations between files are stored in a cache that Dreamweaver creates when a new site is defined.

When files are moved or renamed within the site, Dreamweaver recognizes that other files are related to the moved or renamed files and prompts you to update the links in all of the affected files.

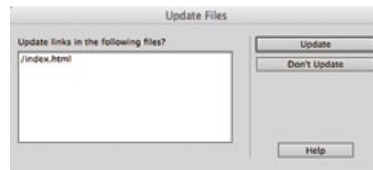
1. With the Kinetic site open in the Files panel, click and drag **burger.jpg** into the images folder.

Make sure you drag the file directly over the name of the folder or folder icon; if you drag the file too far to the left or right, Dreamweaver will not move the file.



2. When prompted, click **Update** to update the affected pages with the new location for the **burger.jpg** image file.

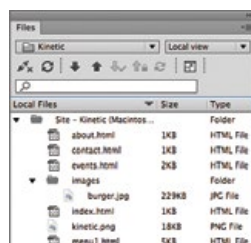
When a browser downloads a Web page, it reads the page code, requests the image files from the defined locations, and displays the images within the page. You should understand that images in Web pages are not embedded into Web pages; they are merged into the page by the browser.



Files being updated do not need to be open for Dreamweaver to change the required link information. If pages *are* open, links in those pages are updated, but the changes are not automatically saved; you have to manually save each open file to make the updates permanent.

If you choose Don't Update in the Update Links dialog box, the image will not appear in the page that calls for that file. If you had moved the image file using Windows Explorer or the Macintosh Finder, Dreamweaver would not have been aware of the movement, and you would not have had the opportunity to adjust the path to the image file in pages that link to that image.

The burger.jpg file is now stored in the main images folder. When you move files into a folder, that folder automatically expands in the Files panel.



Note:

To avoid potential problems if you accidentally close a file without saving, you might want to close open files before moving or renaming files in the Files panel.

3. In the Files panel, click the Type column heading to sort the site files by type.

By default, site files are sorted by name. You can sort by another criteria by clicking the column headings in the Files panel. Sorting by type allows you to easily find all of the images that are used in this site.

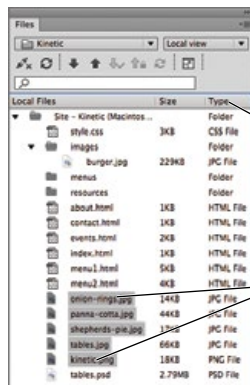
4. Click the first JPG file in the list (onion-rings.jpg) to select that file. Press Shift and click kinetic.png to select all consecutive files between the first and the last ones you selected.

Press Shift to select multiple consecutive files in the panel. Press Command/Control and click to select multiple, nonconsecutive files.

You can also Command/Control-click to deselect a selected file. For example, if you select a file by accident, you can deselect it by Command/Control-clicking the file name.

Note:

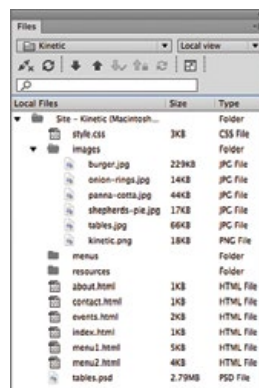
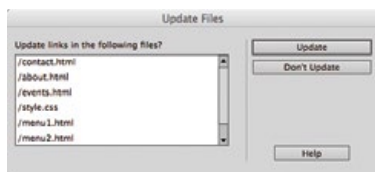
You can change the columns that appear in the Files panel — and the order of those columns — in the File View Columns pane of the Site Setup dialog box.



Click a column heading to sort files based on that option.

Shift-click the first and last files to select multiple consecutive files in the list.

5. Click the icon of any of the selected files and drag the selected files into the images folder. When asked, click Update to update all links to all of the moved files.



Note:

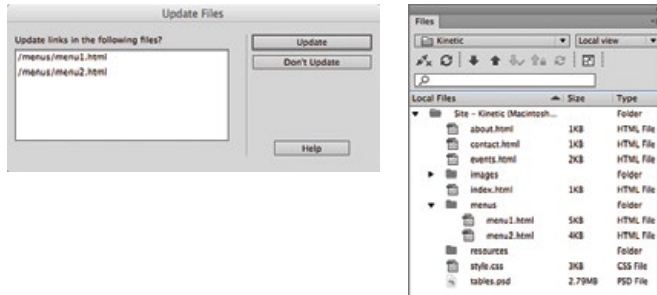
Images in Web sites typically have a GIF, JPG, or PNG extension.

6. Click the down-facing arrow (Macintosh) or the “-” symbol (Windows) to the left of the images folder name to collapse the folder.

7. Click the Local Files column header to re-sort the files by name.

8. Select menu1.html and menu2.html, and move them into the menus folder. Update the links when asked.

This is a relatively small site, so nesting files into subfolders isn't strictly necessary. However, when you work with larger files, clearly organized subfolders can be extremely helpful in maintaining a site that is easy to update as often as necessary.



Note:

You can also copy and paste files into a folder using the Edit options in the contextual menus, or using the standard keyboard shortcuts:

Cut:
Command/Control-X

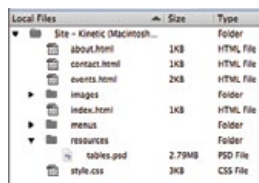
Copy:
Command/Control-C

Paste:
Command/Control-V

9. Collapse the menus folder.

10. Select and move the file tables.psd into the resources folder.

In this case, you are not asked to update links. This is a layered Photoshop file that was used to create the background image behind the page content. It is not part of the actual Web site, but it's a good idea to keep this type of file in the site folder in case you need to make changes later. Later in this project, you will learn how to prevent this file from being uploaded as part of the site.



11. Collapse the resources folder.

From the folder structure alone, the Web site appears to be better organized. You now know what to expect when you open each folder.

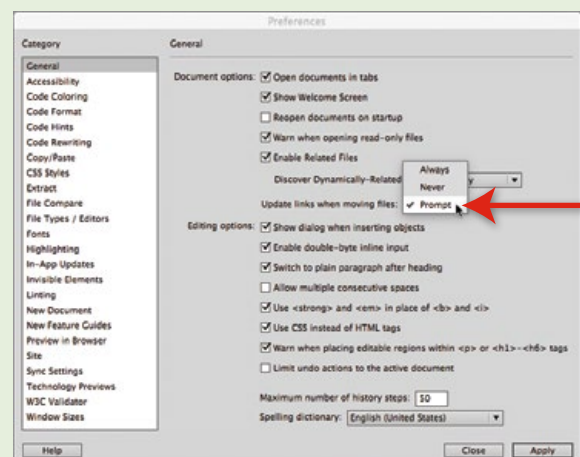
12. Continue to the next stage of the project.

Changing the Update Preferences

As you have seen, Dreamweaver automatically asks you to update links when you move a file in the Files panel. You can change this behavior in the General pane of the Preferences dialog box.

If you choose Always in the Update Links... menu, the affected links are automatically updated without user intervention. In other words, you do not see the Update Files dialog box during the process.

If you choose Never, links are not automatically updated when you move files in the Files panel. If you do not manually correct links, they will result in an error when clicked by a user.



Stage 2 Organizing the Site Navigation

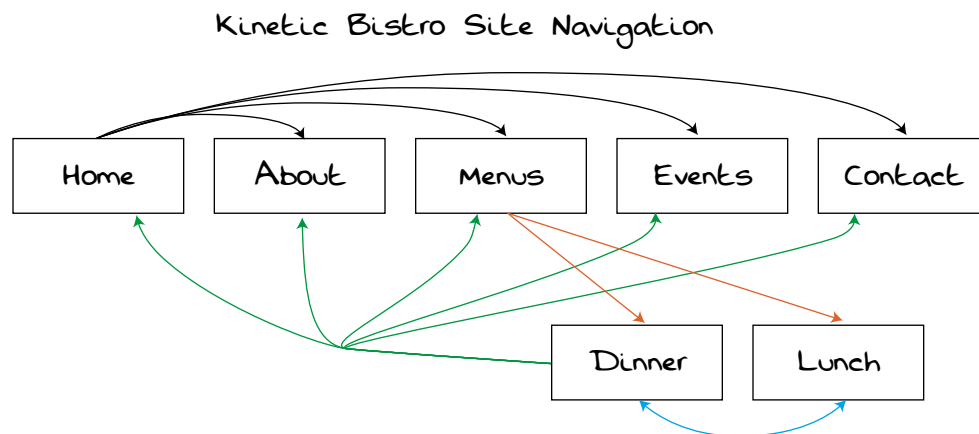
Hyperlinks (the official term for links) can be created to link pages on a site to other pages within the same site, or to pages on other sites. A well-designed site includes links that make it easy to get to any part of a site from any other part of a site. You should carefully plan the flow of links and connections between pages — always keeping the reader’s usability in mind.

Organizing links is a simple application of a science called **information architecture**, which is the organization of a Web site to support both usability and “findability.” As you organize site links, remember that your goal is to enable visitors to see a pattern in your links, which will assist them in navigating through your site. Keep the following points in mind when you plan a site’s link structure:

- You can’t know how visitors will enter your site. The primary site pages (home, about us, etc.) should be accessible from every page on the site.
- When linking secondary pages such as different menus for different mealtimes, don’t make users constantly click the browser’s Back button. Links should allow users to navigate all sibling pages (at the same level) as easily as navigating the primary structure. For example, users should be able to access the dinner menu or lunch menu in the restaurant’s site without first going back to a main “Menu” page.

Using the terms “parent,” “child,” and “sibling” is simply a way of describing relationships between pages. A large Web site cannot provide links to all of the pages from its home page. By grouping pages, grouping groups of pages, and so on, you create relationships of equality between pages that are grouped together, as well as between groups that are grouped together.

When you plan a new site, you should create this type of flowchart to make sure you create all the necessary links that make the site as user-friendly as possible. A flowchart of the required Kinetic site link structure is shown below.



In this stage of the project, you will learn various techniques to create the necessary links on the Kinetic site pages.

CREATE HYPERLINKS WITHIN THE SITE

Dreamweaver offers a number of options for creating the necessary links for any Web site structure.

- **Hyperlink Button in the HTML Insert Panel.** Clicking the Hyperlink button in the HTML Insert panel opens the Hyperlink dialog box, where you define the specific parameters of the link.
- **Insert>Hyperlink menu.** This menu command opens the same dialog box that you see when you click the Hyperlink button in the Insert panel.
- **Properties Panel Fields.** You can also simply define the specifics of a hyperlink in the Properties panel. This method offers the same options as those in the Hyperlink dialog box but does not require the dialog box interface.
- **Point to File button in the Properties panel.** To create a link using this method, simply click the Point to File button, hold down the mouse button, and drag to a file in the Files panel; Dreamweaver automatically creates a link.
- **Browse for File button in the Properties panel.** The Browse for File button opens a navigation dialog box where you can select the file that will open when a user clicks on the link.
- **Shift-Drag Method.** You can create a link directly from the document window by pressing Shift and then clicking and dragging from the link source to the destination page in the Files panel. (This method only works for text; you can't Shift-drag to create a link for an image.)
- **Quick Property Inspector in Live View.** When the Live view is active, you can use the Link button in the Quick Property Inspector, which appears attached to the selected item in the document window, to create a hyperlink.

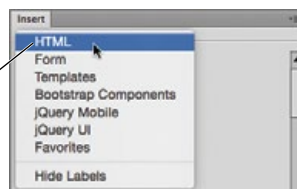
Note:

Dreamweaver often includes several different ways to achieve the same result. You should use the method that is most efficient at the time.

1. With the KINetic site open in the Files panel, open `index.html`. Make sure the Live view is not active.
2. At the top of the page, double-click the word “HOME” to select it.
3. If your Insert panel is docked above the document window, click the HTML tab at the top of the panel.

If your Insert panel is docked on the right side of the screen, or if it is floating as a separate panel, choose HTML in the menu at the top of the panel.

If docked in standard mode, use the menu at the top of the panel to access different categories of options.

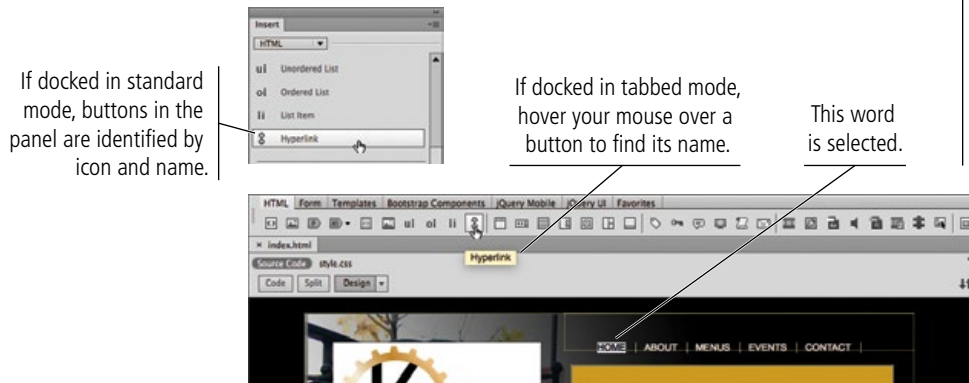


If docked in tabbed mode, use the tabs at the top of the panel to access different categories of options.



4. Click the Hyperlink button in the HTML Insert panel.

The HTML Insert panel contains many of the common functions you use to create Web pages. If a different Insert panel is showing, you can return to the HTML Insert panel by choosing HTML in the panel menu.



Note:

From this point on, we will leave our Insert panel docked on the right side of the workspace, immediately below the Files panel. Feel free to organize your workspace however you prefer.

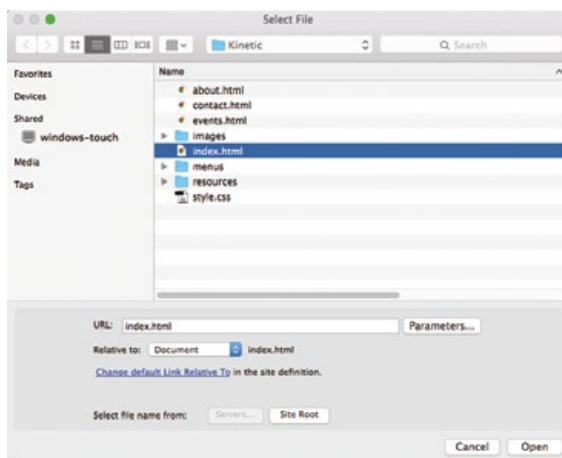
5. In the Hyperlink dialog box, click the Browse button to the right of the Link field.

The text selected in the document appears in the Text field by default. (If an image is selected, this field defaults to be blank.)



6. Navigate to your WIP>Kinetic folder, select index.html, and click Open/OK to return to the Hyperlink dialog box.

In the Link field, you can either type the URL of a location outside the site you're building, or you can click the Browse button to select a file within the current site.



Note:

Remember, when commands are different for different operating systems, we list them as Macintosh/Windows.

The HTML Insert Panel in Depth

The HTML Insert panel contains buttons for frequently used items. For example, to insert a hyperlink, simply click the corresponding button. (Some of the terms and functions in the following descriptions will make more sense as you use those tools to complete later projects.)

- **Div** inserts sections (divisions) in a page, which are useful for inserting blocks of content that you want to format independently from other blocks. You will work extensively with div tags in later projects.
- **Image** opens a dialog box where you can define the source for the image you want to insert.
- **Paragraph** surrounds each selected paragraph with `<p></p>` tags, which is the proper HTML structure for a paragraph of text.
- **Heading** is used to assign predefined HTML heading levels (h1 through h6) to selected text.
- **Table** inserts an HTML table into the page.
- **Figure** inserts a properly structured HTML figure, including the appropriate tags for the figure and the figure caption.
- **Unordered List** creates a bulleted list from the selected paragraphs; each selected paragraph is automatically tagged as a list item.
- **Ordered List** creates a numbered list from the selected paragraphs; each selected paragraph is automatically tagged as a list item.
- **List Item** creates a new list item at the location of the insertion point. No ordered or unordered list is created to surround the list item.
- **Hyperlink** opens a dialog box where you can create text or image links to another file, either in the same Web site or in an external Web site.
- **Header, Navigation, Main, Aside, Article, Section, and Footer** add the related HTML5 tags to the page. You have the option to determine exactly how the tags are applied in relation to selected text, as well as defining an ID or class attribute for the resulting tag.
- **Meta** opens a dialog box where you can define a variety of page head information. When you type specific values in the name and content fields, the appropriate information is added to the page head using the following structure:

```
<meta name="test" content="123">
```
- **Keywords** opens a dialog box where you can define keywords in the page head. The keywords are added using the following structure:

```
<meta name="keywords" content="words">
```
- **Description** opens a dialog box where you can define a text-based description to the page head. The description is added using the following structure:

```
<meta name="description" content="Text">
```
- **Viewport** offers a way to better control the appearance of a page on mobile devices. It sets the width of the visible area of a web page on a user's device to match the width of the device screen.
- The **Script** button can be used to add code from an external file, which will be used by the browser to perform an action when the page is accessed.
- The **Email Link** button opens a dialog box where you can create links to email addresses.
- **HTML5 Video** inserts a video element, which allows a video file to be played directly in an HTML5 page without the need for external browser plugins.
- **Canvas** inserts a canvas element, which is a container for graphics that are created directly in the page using scripts.
- **Edge Animate Composition** places a defined Edge Animate composition (OAM file) into the HTML page at the location of the cursor.
- **HTML5 Audio** inserts an audio element, which allows an audio file to be played directly in an HTML5 page without the need for external browser plugins.
- **Flash SWF** allows you to place a SWF file (created from a Flash animation). Keep in mind that SWF files require the Flash Player browser plugin to function properly.
- **Flash Video** allows you to place an FLV file, which is a video format created from Flash professional. Again, this format requires the Flash Player browser plugin to function properly.
- **Plugin** embeds a specific user-defined plugin file into the page.
- **Rollover Image** opens a dialog box where you can define the default image, as well as a different image that will appear when a user's mouse cursor enters into the image area.
- **iFrame** inserts an iFrame element, which allows you to embed one document into another.
- **Horizontal Rule** inserts a solid line across the width of the page. This can be useful for visually separating sections of text.
- The **Date** button inserts the current date and time. In the resulting dialog box, you can choose the date format, as well as an option to update the date and time whenever the file is saved.
- **Non-Breaking Space** adds a special character that prevents a line break from appearing between specific words in a paragraph.
- **Character** is used to insert special characters, such as copyright symbols and foreign currency characters.

7. Open the Target menu and choose `_self`.

This option determines where the linked file will open:

- `_blank` opens every linked file in a new, unnamed browser window.
- `new` creates a new browser window with the name “_new”. Every link assigned the `_new` target will open in that same `_new` browser window.
- `_parent` is relevant if a page includes nested frames; this option opens the link in the frame or window that contains the frame with the link.
- `_self` opens the link in the same frame or browser window as the link. This is the default behavior if you do not choose an option in the Target menu.
- `_top` opens the link in the same browser window, regardless of frames.

8. In the Title field, type **Kinetic Bistro home page**.

The Title field defines text that appears when the cursor is placed over the link text. Defining a descriptive title for links can help a page achieve better search engine results.



Note:

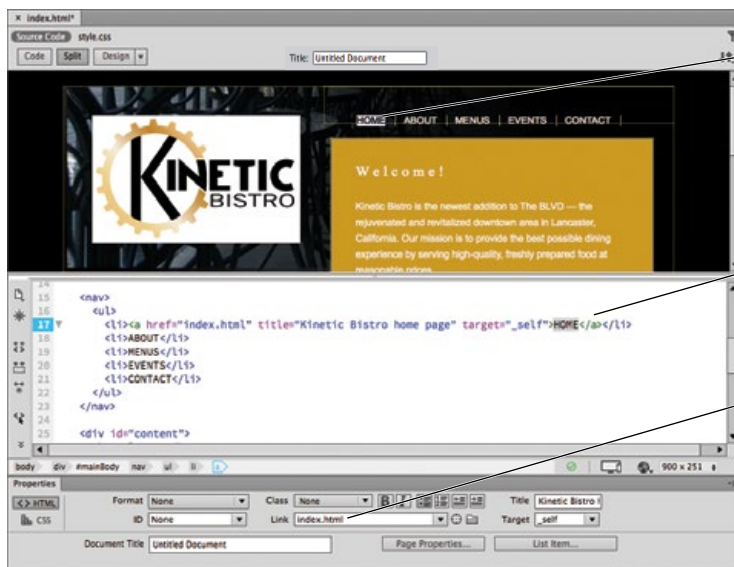
You can use the Access Key field to define a keyboard shortcut for the link and use the Tab Index field to specify the number of times a user needs to press the Tab key to select the link.

9. Click OK in the Hyperlink dialog box to create the link.

10. Click the Split button in the Document toolbar to review both the design and code views at one time.

A Web page is basically a page full of code. A browser reads the code to determine how to treat various elements of the page. HTML code largely revolves around tags, which tell a browser how to interpret specific objects on the page.

A hyperlink is identified by the `a` element, which starts with the opening `<a>` tag; the link destination and target are defined as attributes of that tag (`href="index.html" target="_self"`). After the link text, the closing tag (``) identifies the end of the link.



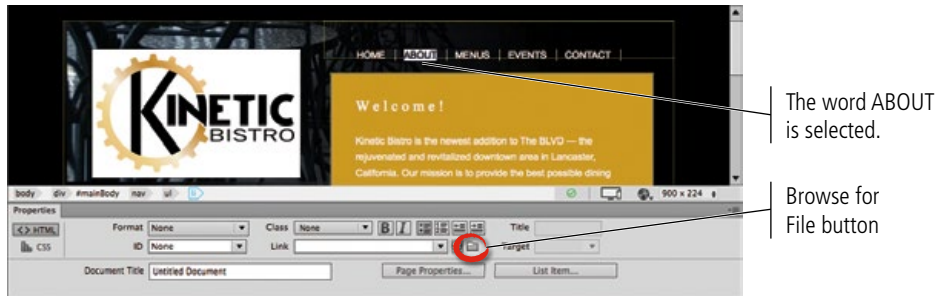
The selected text is now a link.

In the code view, the link text is surrounded by opening and closing `<a>` tags, which identify the text as a link.

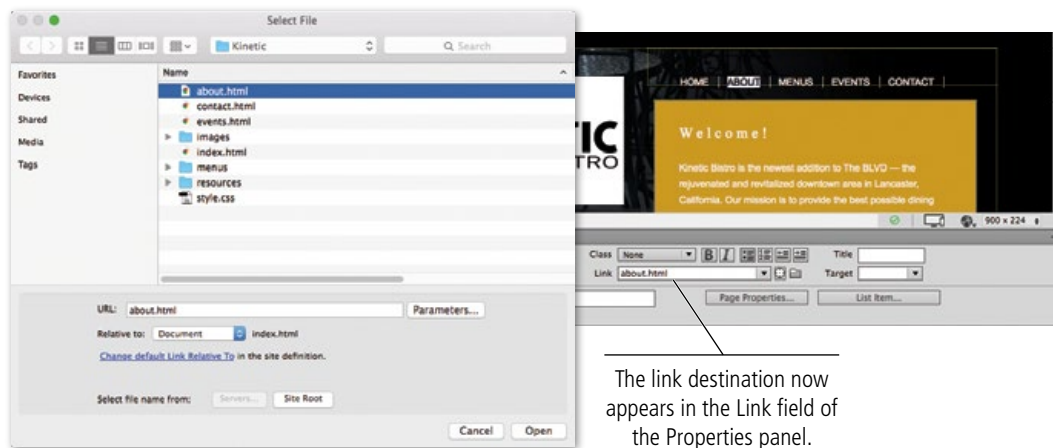
The link destination now appears in the Link field of the Properties panel.

11. Select the word “ABOUT” at the top of the page.
12. Click the Browse for File button to the right of the Link field in the Properties panel.

If you don't see the Properties panel, choose Window>Properties. The Properties panel's primary purpose is to review and change the properties of the selected HTML element (such as a heading, paragraph, or table cell).

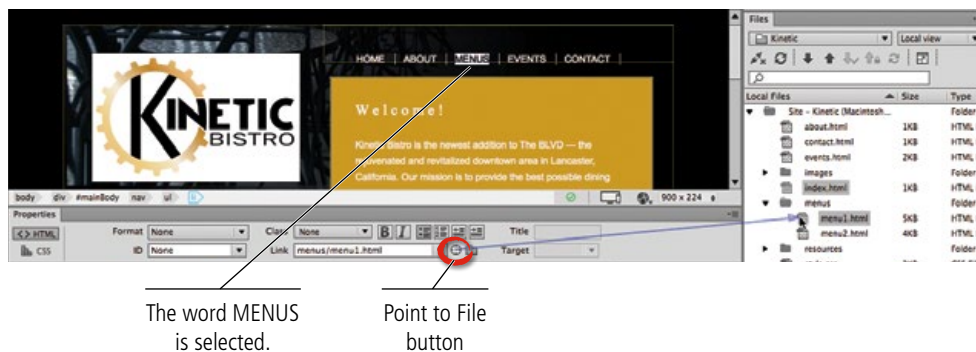


13. In the resulting dialog box, select about.html, and then click Open/OK.



14. Select the word “MENUS” at the top of the page.
15. Expand the menus folder in the Files panel.

You should expand and collapse Files panel folders as necessary, depending on your available screen space. We will not repeat instructions to collapse or expand folders unless it is necessary to perform a specific function.
16. Click the Point to File button in the Properties panel, hold down the mouse button, and drag to menus/menu1.html in the Files panel.



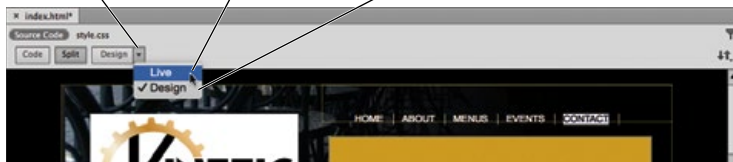
17. Select the word “EVENTS” at the top of the page.
18. Press the Shift key, then click the selected text and drag to `events.html` in the Files panel.

You have to press the Shift key, and then click and drag to the link destination. If you try to click and drag before pressing the Shift key, this technique will fail.



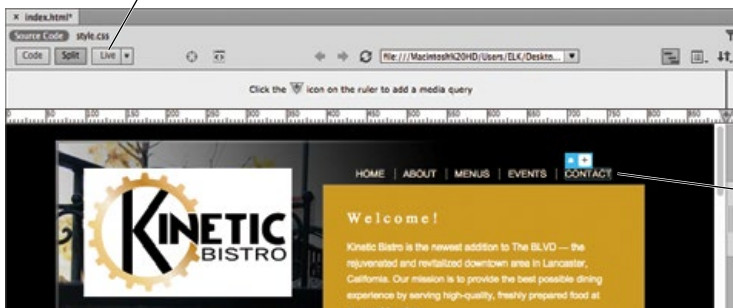
19. Use any method you just learned to create a link from the word “CONTACT” to the `contact.html` file.
20. In the Document toolbar, click the arrow to the right turn of the Design button and choose Live from the menu to turn on the Live view.

Click the arrow to open the button menu. Choose Live in the menu to turn the Live view on. Choose Design in the menu to turn the Live view off.



In the Live view, you can accurately see how the CSS will be rendered by Web browsers.

The button text shows whether (regular) Design or the Live view is active.



In the Live view, CSS is properly rendered and the link appears correctly on one line.

Note:

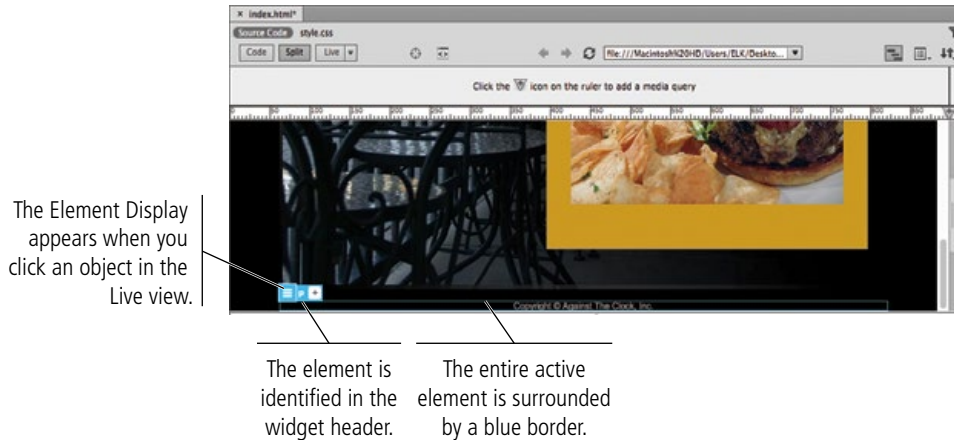
*When a link to another page in the site is selected in the document, you can open the related page in Dreamweaver by choosing **Modify > Open Linked Page**.*

Note:

*You can remove a link by selecting the linked text or object in the document and choosing **Modify > Remove Link**, or by simply deleting the text from the Link field in the Properties panel.*

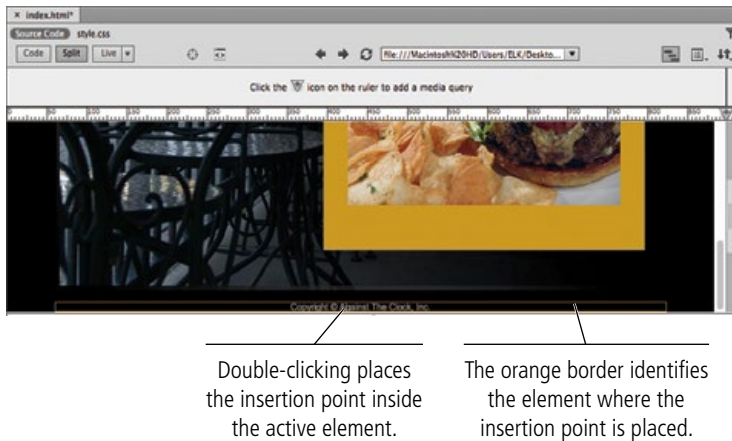
21. In the Design window with the Live view active, click once to select the footer paragraph at the bottom of the page.

When the Live view is active, clicking an object in the document window shows the Element Display, which shows the active HTML element. (If an element has a defined ID or class attribute, those also appear in the Element Display. You will learn about IDs and classes in later projects.) In this case, you can see that the selected element is a `p` element — in other words, it is a paragraph.



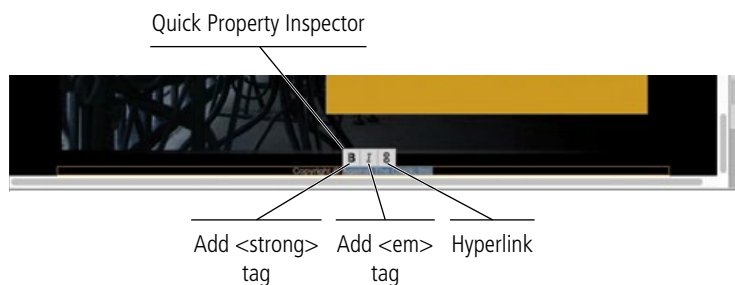
22. Double-click the text in the selected paragraph to place the insertion point.

You can now place the insertion point and edit text directly in the Live view. (You might have to look closely to see the insertion point in this case.)



23. Double-click and drag to select the words “Against The Clock, Inc.” within the active paragraph.

In the Live view, the Quick Property Inspector shows options related to the selected text. You can use the **B** and **I** buttons to apply the `` and `` tags (respectively). You can also click the Hyperlink button to define a link destination for the selected text.



Note:
The *strong* and *em* tags are explained in Project 2: Digital Book Chapter.

24. In the Quick Property Inspector, click the Hyperlink button. In the resulting Link field, type **http://www.againsttheclock.com** as the link destination.

Dreamweaver can't help you create an external URL link because it's outside the site definition. You have to simply type or paste the address into the Link field.

An external **URL link** must begin with the "http://" protocol, followed by the domain name and, if relevant, the folder path and file name of the page to which you are linking.



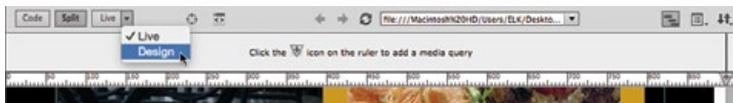
Clicking the Hyperlink button opens the Link field for the selected text.

You can click the Browse for File button to define an existing file as the link.

25. Click anywhere else in the workspace to finalize the hyperlink you defined in Step 24.

26. In the Document toolbar, click the arrow to the right turn of the Live button and choose Design from the menu to turn off the Live view.

You should become familiar with the process of turning the Live view on or off. We will not continue to repeat these specific instructions as you move throughout the projects in this book.



Note:

To minimize the repetitive work required, we already defined this link for you on the other pages in the site. In a professional environment, you would need to add this link to every page in the site.

27. Choose File>Save to save your changes, then continue to the next exercise.

COPY AND PASTE LINKS

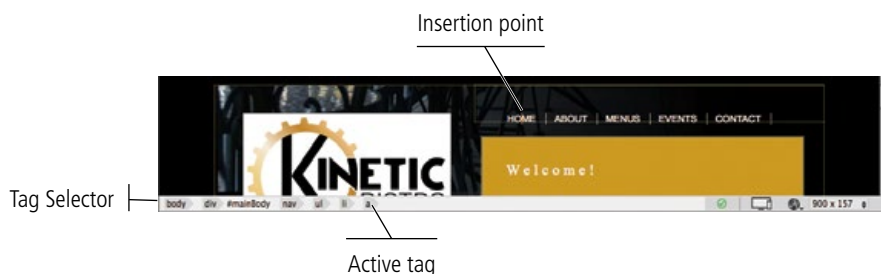
Rather than manually creating the same links on every page, you can now simply copy and paste them from one page to another.

1. With **index.html** open (from the Kinetic site), click in any of the text links to place the insertion point.

The insertion point is the location where text will appear if you type.

2. Review the Tag Selector below the document window.

The Tag Selector, located in the status bar of the document window, shows the nesting order of HTML tags (the "path of tags") based on the current selection or the current location of the insertion point.



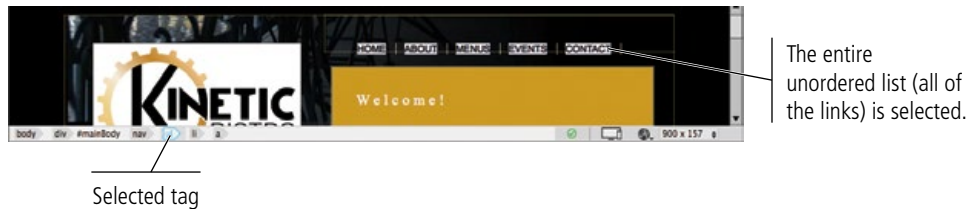
Note:

You will work more extensively with tags beginning in Project 2: Digital Book Chapter.

3. Click the `` tag in the Tag Selector.

The `` tag identifies an unordered list, which is how this navigation structure was created; each link is a separate list item (using the `` tag).

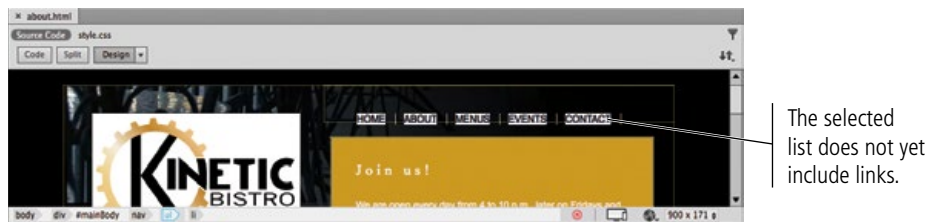
Clicking a tag in the Tag Selector selects that HTML element and all of its content. In the document window, the associated content is highlighted.



4. Choose Edit>Copy (or press Command/Control-C) to copy the selected content to the Clipboard.

5. Close `index.html` and open `about.html`.

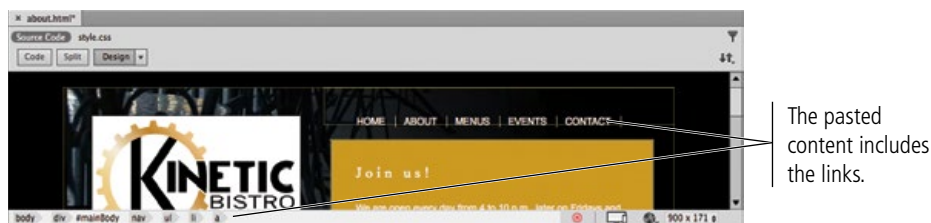
6. Click to place the insertion point anywhere in the list of links at the top of the page, and then click the `` tag in the Tag Selector to select the entire unlinked list.



7. Choose Edit>Paste (or press Command/Control-V) to paste the copied content from the Clipboard.

8. Place the insertion point in any of the links and review the Tag Selector.

The Tag Selector now shows the `<a>` tag for the current insertion point (in our example, the EVENTS link). The Properties panel also shows the destination of the active link.



9. Save the changes to `about.html` and close the file.

10. Repeat Steps 6–9 to paste the copied content (the links) into all HTML pages in the site root level, as well as the two HTML pages in the menus folder.

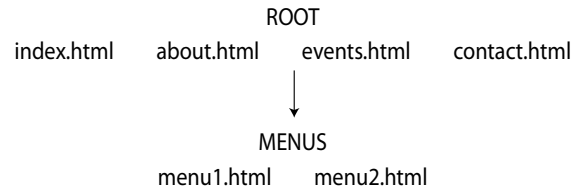
11. Save and close any open file, and then continue to the next exercise.

ADJUST RELATIVE LINK PATHS

A **path** is the route taken through the folder structure to link one page to another. By default, Dreamweaver uses **relative paths** when creating links (the application refers to this as “relative to the document”). The alternative is to create **absolute paths** (“relative to the site”); but unless your site is running on a Web server, you can’t test links that use absolute paths.

As an example, consider creating a link from `index.html` to `about.html`, both of which reside in the root folder (as shown in the figure to the right). In this case, the source and destination pages are in the same folder; the relative-path link simply states the file name of the destination page:

```
<a href="menu2.html">Link Text</a>
```



When you drill down into nested levels of folders, the source folder is not identified in the path; the link automatically works starting from the location of the link. To link from `index.html` to `menu1.html`, for example, you have to include the nested menu folder in the path:

```
<a href="menus/menu1.html">Link Text</a>
```

When the link is in an upward direction, the `../` notation says “go up one folder.” To link from `menu1.html` to `index.html` in the site root folder means that the link needs to take the visitor up one folder level:

```
<a href=" ../index.html">Link Text</a>
```

Each step up in the folder structure requires another command to “go one step up” in the folder structure. If you had another level of nesting inside the menu folder, for example, a link would have to take the visitor up two folder levels to return to the main index page:

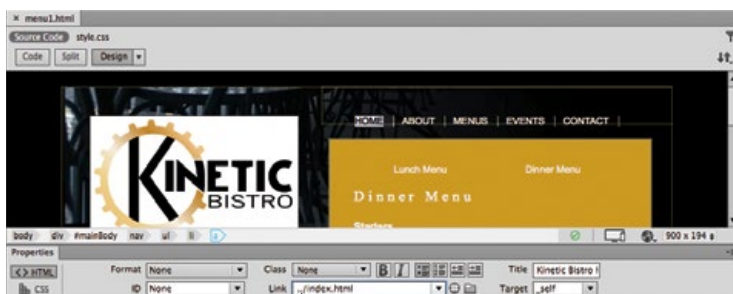
```
<a href=" ../../index.html">Link Text</a>
```

1. With the Kinetic site open in the Files panel, open `menu1.html`.

In this exercise, you are going to adjust the various links so they work properly on all pages in the site.

2. Double-click the word **HOME** at the top of the page to select that element.

3. In the Link field of the Properties panel, type `../` before the existing link. Press Return/Enter to finalize the change.



Type `../` before the existing link.

Accessing Page Content in the Menu Pages

The files for this project were created using divs (using the opening and closing <div> tags), which are simply a way to identify and format parts or sections of a page.

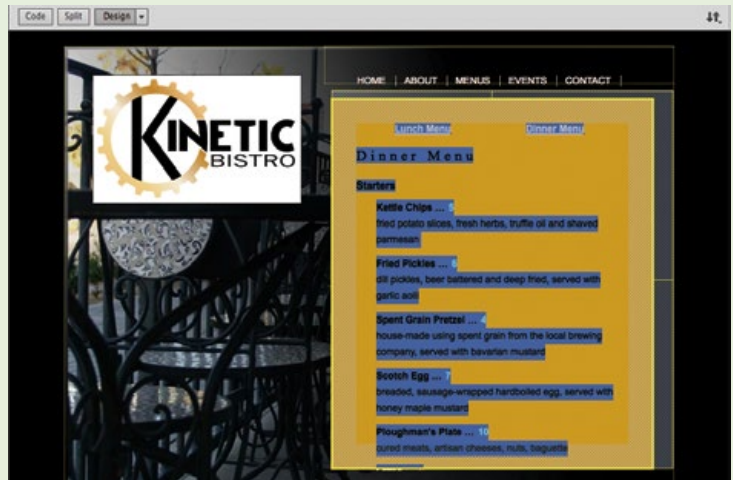
(You will work with divs in Project 4: Museum CSS Layout.) Although you don't need to worry about the underlying page structure for now, you might see some unusual behavior when you try to select content in the main section the menu pages when the Live view is not active.

The area that holds the actual menu content has a fixed height, but both menus have more content than will fit into the defined size. When the page is viewed in a browser, the area includes a scroll bar for users to access the content that doesn't fit.

In Dreamweaver's regular Design view, however, this scrollbar doesn't appear. Instead, the first time you click, the entire div is selected and all of the contained text is highlighted.

Double-clicking inside the area again causes the page to jump down, showing the overflow content.

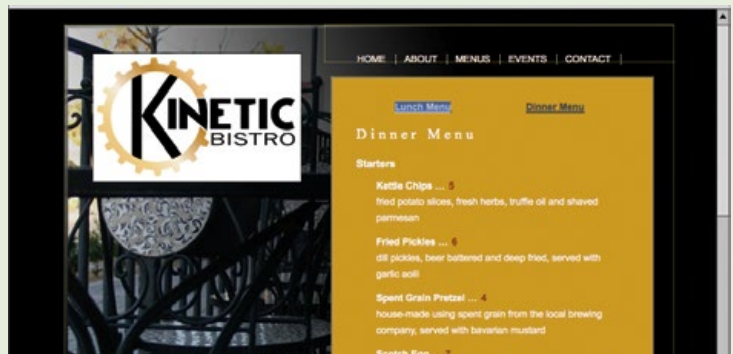
If you click a third time, you can place the insertion point inside the actual text, scroll up as necessary, and then select the link text at the top of the area.



Clicking once selects the entire div that contains the menu content...



...then double-clicking jumps the page down to show the overflow content.

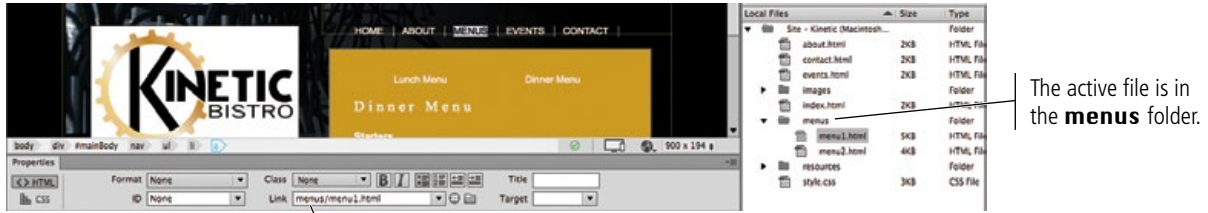


You can then click again to place the insertion point and select specific text.

4. Repeat Steps 2–3 for the ABOUT, EVENTS, and CONTACT links.

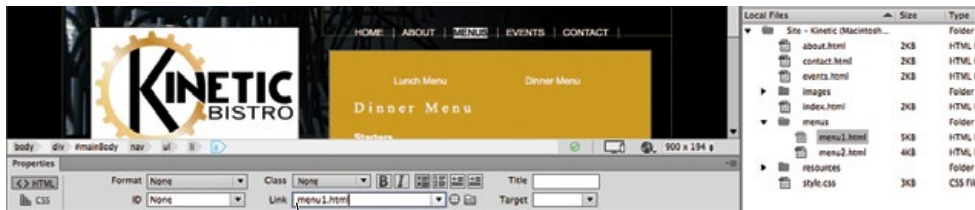
5. Select the word MENUS at the top of the page.

In this case, the link is still a problem because it directs the browser to look for a folder named “menus” inside the same folder as the active page. You need to remove the folder part of the path to prevent an error if a user clicks this link from the menu1.html page.



This link would cause a browser to look for a menus folder at the same level as the active file.

6. In the Link field of the Properties Inspector, delete **menus/** (including the forward slash) from the existing link.

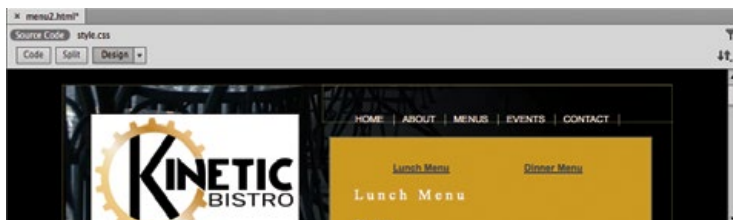


7. Using any method you have learned, link “Lunch Menu” (in the main content area) to menu2.html and link “Dinner Menu” to menu1.html.

See “Accessing Page Content in the Menu Pages” (Page 47) for specific information about selecting the text in the main content area.



8. Repeat the process from Steps 1–7 to adjust the top links and add the necessary secondary links in the menu2.html file.



9. Save and close any open files, then continue to the next exercise.

You can save each file individually, or choose File>Save All to save all open files at once.

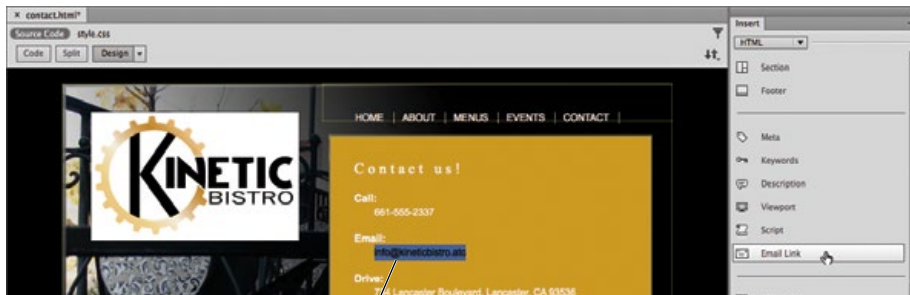


CREATE AN EMAIL LINK

Most Web sites include one or more external links (including email links), which require the appropriate protocol to tell the browser what type of link is present.

An **email link** requires the “mailto:” protocol, followed by the appropriate email address. This instructs the browser to open a new mail message with the defined address already in the To line.

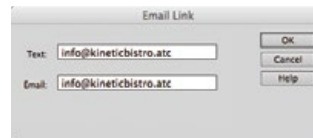
1. With the Kinetic site open in the Files panel, open `contact.html`. Make sure the Live view is not active.
2. Select the words “`info@kineticbistro.atc`” in the main content area.
3. In the HTML Insert panel, click the Email Link button.



Selected text

4. Review the resulting dialog box.

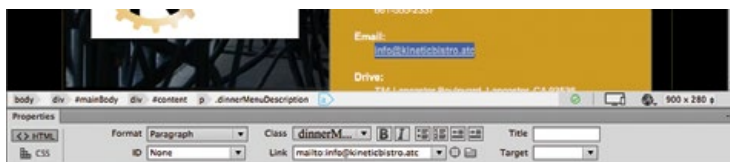
If you select text before clicking the Email Link icon, the Text field is completed for you. Dreamweaver also recognizes that the selected text is an email address, so the Email field is filled in for you.



If the selected text is not recognized as an email address, the Email field defaults to the last address that was defined in the field.

5. Click OK to create the email link.
6. Review the link field in the Properties panel.

An email link must begin with “mailto:” followed by the address. When you use the Email Link dialog box, Dreamweaver automatically inserts the mailto: protocol.



In many cases throughout this book, we use “[company].atc” as the domain of a site. Although at the time of writing, none of the domain names we use are real, new domains are registered every day. We use the fictitious “.atc” domain to avoid inadvertently using the domain name of a real company.

When you upload files to a server, you should use the accurate domain (.com, .gov, .edu, etc.) for the site you are building.

7. Save the file and close it, then continue to the next stage of the project.

Note:

You can access the same Email Link dialog box by choosing *Insert>Email Link*.

Stage 3 Naming and Titling Documents

When a **Web server** (a computer that stores and delivers Web pages) receives a request for a folder but not a specific page, the Web server delivers the default page for that folder — usually named `index.html` or `index.htm`. There is no practical difference between the two extensions; most Web servers can serve files with either extension. (If you do not have an index file in that folder, the link will result in an error.)

To create links to the default page in a specific folder, you do not need to include the file name if you use the index naming convention. Both `www.kineticbistro.com/` and `www.kineticbistro.com/index.html` refer to the same page.

RENAME PAGES FOR SEARCH ENGINE OPTIMIZATION

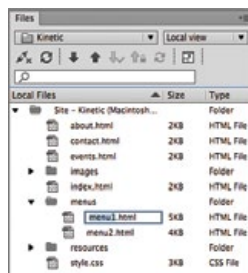
Search engine optimization (SEO) is the process of improving the ranking of a Web page on search engine results pages (SERPs). Search engines certainly use the content of a page for ranking purposes, but the names of folders and files also affect rankings.

Descriptive folder and file names improve usability; you can use `m/menu1.html` for the path to the dinner menu page, for example, but `/menus/dinner-menu.html` is much easier for visitors to understand — and will improve your search engine ranking.

In this exercise, you rename the menu pages to more accurately describe what is contained in the files. As with moving files, the application recognizes when a file name has been changed and knows that links to the page must be adjusted.

1. With the Kinetic site open, click `menus/menu1.html` in the Files panel to select that file.
2. Click the selected filename again to highlight it.

This highlights the existing filename, excluding the extension.



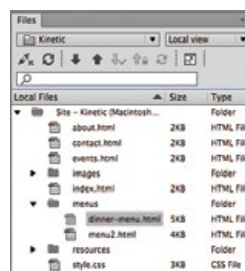
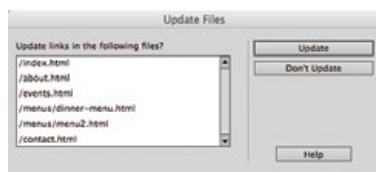
Note:

You can also Control+right-click a file in the Files panel and choose `Edit>Rename` to rename a specific file.

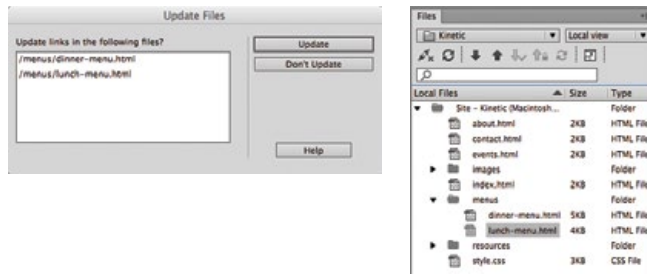
3. Type `dinner-menu`, then press Return/Enter. In the resulting dialog box, click `Update` to update all pages that link to this page.

Typing when the filename is highlighted replaces the previous file name. Pressing Return/Enter finalizes the change.

As with moving files, Dreamweaver recognizes that all links to the renamed page need to point to the new file name.



4. Repeat Steps 1–3 to rename `menu2.html` as `lunch-menu.html`.



5. Continue to the next exercise.

Understanding Web File Naming Conventions

DREAMWEAVER FOUNDATIONS

Because different servers run on different operating systems, the safest way to name pages is to use only characters that are guaranteed to work perfectly:

- a through z (use only lowercase letters)
- 0 through 9
- Hyphen (great-site.html)
- Underscore (great_site.html)

Some designers use **CamelCase** — uppercase letters at the beginning of each word within a file name, such as `UniversalStudios.html`. The problem with mixing the lettercase is that some Web server software is case-sensitive and some is not. Most Windows-based Web server software is not case-sensitive, but UNIX- and Linux-based Web server software is case-sensitive. Considering that many Web servers run on UNIX- or Linux-based computers, it's best to use only lowercase file and folder names.

Consider everything else to be “illegal,” including:

- Spaces
- Brackets of all kinds, including (), [], { }, and < >
- Symbols, including #, @, %, ~, |, *, and &
- Quotation marks, both double (" ") and single (' ')
- Slashes, both back slashes (\) and forward slashes (/)
- Commas, periods, question marks, and exclamation points
- Uppercase characters



CREATE DOCUMENT TITLES FOR INDIVIDUAL PAGES

Appropriate document titles are an important concern for both search engines and site visitors. While the document title does not appear within the body of a Web page, it does appear in the title bar of the browser, as the default name of the page in the Bookmarks or Favorites list, and as the page name in search-engine results pages.

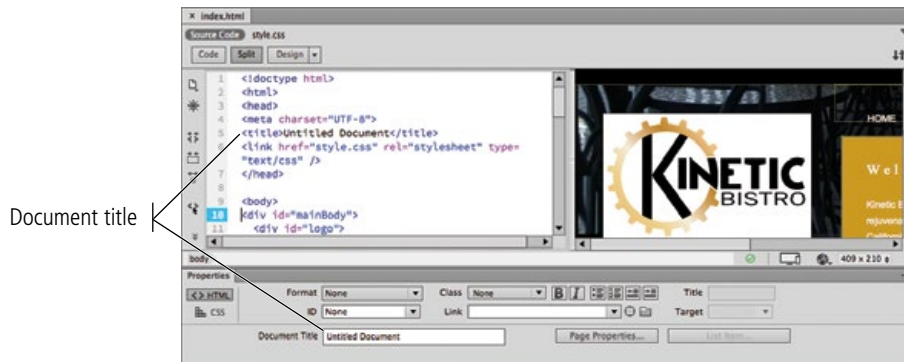
Page titles should be relatively short, around 70 characters or so to avoid their being truncated in various locations (such as a user's Bookmarks/Favorites list). You should separate the components of the title with some type of divider, such as a colon (:) or pipe (|) character.

In this exercise, you add document titles to the new pages to increase the pages' search engine rankings and improve usability for visitors who find the pages in search engines and bookmarks. You also learn to use the Find and Replace function, which can greatly reduce the amount of effort required to create all of the document titles.

1. With the **Kinetic** site open in the **Files** panel, open `index.html`.
2. Click the **Split** button in the **Document** toolbar to show both the **Code** and **Design** views at one time.

3. Examine the Document Title field in the Properties panel.

When you create a new page in Dreamweaver, the default title is “Untitled Document”. That text appears in the Document Title field by default, and in the title element in the Code pane (wrapped in the opening and closing `<title>` tags).



Note:

When you use the Split view, feel free to arrange the pane however you prefer. We arrange them as necessary to best suit what we are trying to show in our screen captures.

4. Choose Edit>Find and Replace.

5. Open the Find In menu and choose Entire Current Local Site.

This option allows you to affect all files in the active site. You can also search only selected text; the current (active) document; all open documents; a specific folder; or only selected files in the active site.

6. Choose Source Code in the Search menu.

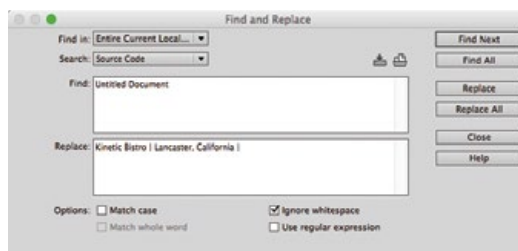
The document title does not appear in the body of the page, so when you use Find and Replace, you must apply the change to the source code rather than the document text.

7. In the Find field, type **Untitled Document**.

8. In the Replace field, type **Kinetic Bistro | Lancaster, California |**. (Include a space after the final pipe character.)

All pages in the site will include this block of text at the beginning of the document title. Further detail about individual pages will be added to the right of this information.

Unlike file names, document titles can use mixed lettercase and include spaces and other characters. However, you should avoid both single and double quotation marks.

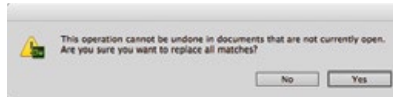


Note:

Some experts disagree whether the company name should come before or after the specific page information in a title. However, putting the company name at the beginning of the page title can help with search engine results because the company name is an important keyword.

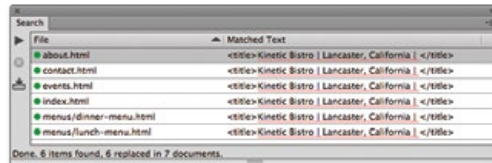
9. Click Replace All. When prompted to confirm whether you want to proceed with this function, click Yes.

Like most applications, Dreamweaver has an Undo function that allows you to undo the most recently completed actions; however, this function only works if the document is open.



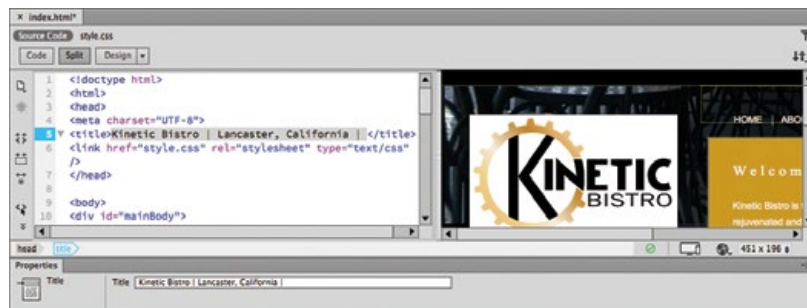
Since you are using the Find and Replace function on the entire folder and not only on an open page, you are making changes in closed documents — which means you cannot use the Undo command.

After completing the Find and Replace function, Dreamweaver displays the results in the Search panel.



10. Examine the title in the Properties panel and the Code pane again for the open file (index.html).

As a result of the Find and Replace function, the document title has been changed. The same change has been made in all pages in the site. (Because the **title** tag of the open page is active in the Code pane, the Properties panel now shows only options for that active element.)



11. Control/right-click the Search panel tab and choose Close Tab Group.

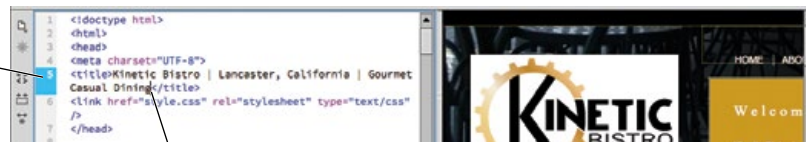
12. Click in the Code pane to make it active.

Making a specific pane active is called “bringing it into focus”.

13. Click at the end of the existing page title to place the insertion point immediately before the closing </title> tag, then type **Gourmet Casual Dining.**

You can edit the page title in the Document toolbar or in the Code pane. Changes in either place are automatically applied to the other.

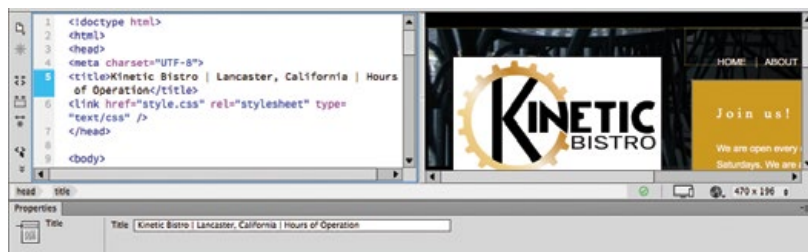
In the Code pane, highlighting identifies the entire line where the insertion point is placed.



Type the new information immediately before the closing </title> tag.

14. Save index.html and close it.

- Open `about.html`. Using either the Code pane or the Document Title field in the Properties panel, add **Hours of Operation** to the end of the existing page title.



- Save `about.html` and close it.
- Repeat this process (Steps 12–16) to change the page titles of the remaining pages as follows:

File	Title
<code>contact.html</code>	Address and Contact Information
<code>events.html</code>	Special Event Facilities
<code>menus/dinner-menu.html</code>	Dinner Menu
<code>menus/lunch-menu.html</code>	Lunch Menu

- Continue to the final stage of the project.

Stage 4 Making Files Public

To complete the final stage of this project — making your files accessible to the browsing public — you need to have access to some type of server.

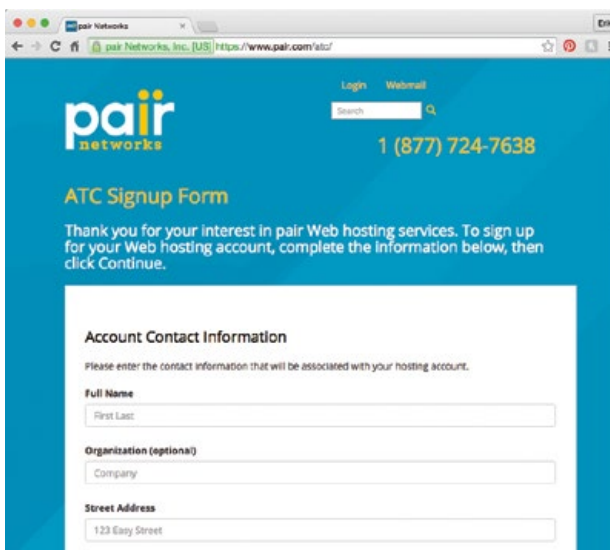
On the inside back cover of this book, you have a code that you need to gain access to the required resource files. The same code also provides access to a six-month, free trial Web hosting account at Pair Networks (www.pair.com).

If you don't already have access to an online server, go to www.pair.com/atc/ to sign up for your hosting account before you complete the final stage of this project. You must enter your contact information and the code from the inside back cover of your book. You should then define a user name in the last field; this will become part of the server name for your hosting account.

After you click Continue, you will receive an acknowledgement that your request is being processed. (The message warns that the setup process can take up to one business day — although it is usually about an hour. You should complete this step as early as possible.)

You will receive a confirmation email, sent to the email you defined in the Signup Form, with your username and password information. Once you receive the confirmation email, you are ready to complete the final stage of this project.

Important note: Pair Networks provides a free six-month trial account for Against The Clock users. If you do not cancel the account before the six months end, you will be billed a small monthly fee for the hosting account.

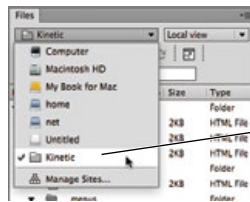


HIDE FILES FROM THE WEB SERVER

As you saw when you created the folders for the new site, not all of the new files are meant to be uploaded to the Web server — specifically, the Photoshop file in the resources folder. (You should, however, store such files locally as source files or documentation for the work you completed.) Dreamweaver provides a very useful function — called **cloaking** — that allows you to prevent certain files from uploading. You can cloak an individual file; cloak all files with the same extension (for example, all native Photoshop files with the PSD extension); or cloak a folder, which also cloaks all files in that folder.

1. **With the Kinetic site open in the Files panel, open the Directory menu and click the Kinetic site name in the menu.**

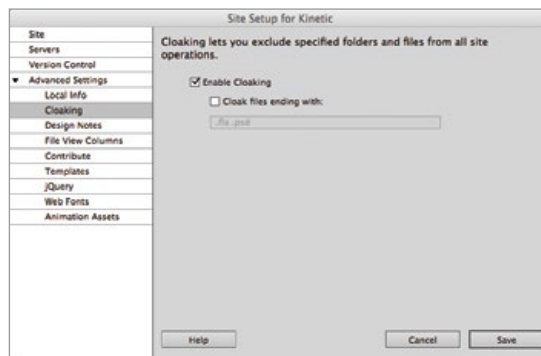
This opens the Site Setup dialog box for the selected site. You do not need to go through the Manage Sites dialog box to edit the settings for the active site.



Click the site name in the Directory menu to open the Site Setup dialog box for the selected site.

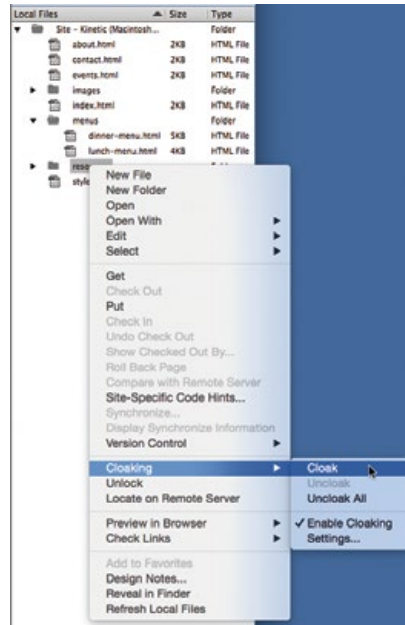
2. **In the Site Setup dialog box, expand the Advanced Settings menu on the left side and click Cloaking to show the related options.**
3. **Make sure the Enable Cloaking check box is active.**

When Enable Cloaking is checked, you can hide selected files and folders from a Web server. You can also use the Cloak Files Ending With option to hide all files with the extensions that are listed in the field.



4. **Click Save to close the Site Setup dialog box.**
5. **In the Files panel, collapse all open folders and expand only the resources folder.**

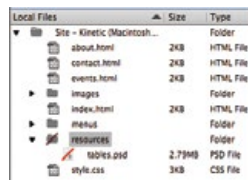
6. Control/right-click the resources folder and choose Cloaking>Cloak.



Note:

You can also cloak a specific file by Control/right clicking that file in the Files panel and choosing Cloaking>Cloak.

Notice the red slash through the resources folder icon and the icon for the file in the resources folder. The red slash refers to the cloaking function only; it does not prevent you from working with the files, adding more files, or deleting any of the existing files.



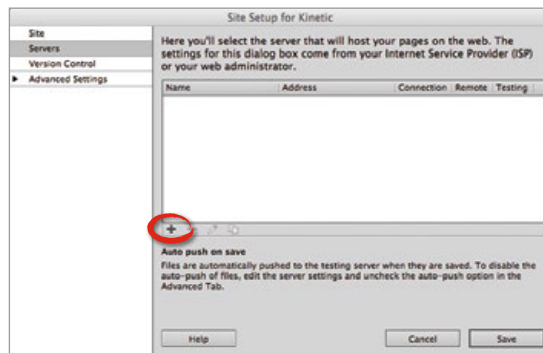
7. Continue to the next exercise.



DEFINE REMOTE CONNECTION INFO FOR THE SITE

For Dreamweaver to manage file uploading, you first have to define the hosting server connection settings as part of the site setup information.

1. With the KINetic site open in the Dreamweaver Files panel, re-open the Site Setup dialog box for the site.
2. In the Site Setup dialog box, click Servers in the list of categories, then click the + button near the bottom of the dialog box to define a new server.



3. In the Basic options, type a name for the server you are using.

This name is simply for you to identify it in Dreamweaver.

4. Assuming you are working with a remote server, choose FTP in the Connect Using menu.

If you are using a local server, consult your network administrator for the settings to use.

5. In the FTP Address field, type the hostname for your server.

Using our example hosting account at Pair Networks, the FTP host is the same as the server name. (If you signed up for this service, your server name was in the confirmation email that you received after signing up.) Check your hosting account documentation for your FTP hostname and account information.

6. Type your FTP login (username) and password in the related fields.

These are the username and password for your hosting account. Again, this information was probably sent to you via email when you first set up the hosting account; consult your server documentation for the correct information to use.

7. In the Root Directory field, type the location of the folder where you want the files to be placed.

Some hosting providers require you to place public files inside a specific folder, such as `public_html` or `www`. When users navigate to your URL, they see the index page located in the designated folder.

Using a hosting account at Pair Networks, as in our example, public files must be placed in the `/usr/home/USERNAME/public_html/USERNAME.pairserver.com/` folder (the word “USERNAME” would be replaced by your personal username),

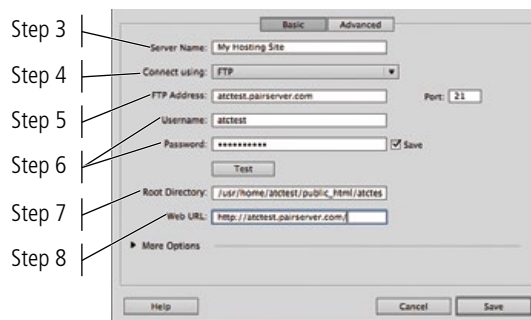
8. In the Web URL field, type the URL at which users will access the site.

Dreamweaver automatically defines this URL based on your other choices in this dialog box; the default value will be “`http://`” plus the FTP Address plus the Root Directory. In our example, the default was `http://atctest.pairserver.com/usr/home/public_html/atctest.pairserver.com/`.

You need to change the URL to the path a user would type in a browser to access your site. In our example, the address is `http://atctest.pairserver.com/`.

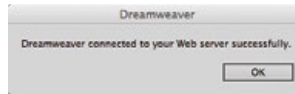
Note that we removed the root-directory folder path from the URL; it is only required when you upload files for viewing over the Internet.

Make sure you enter the correct information for your domain name.



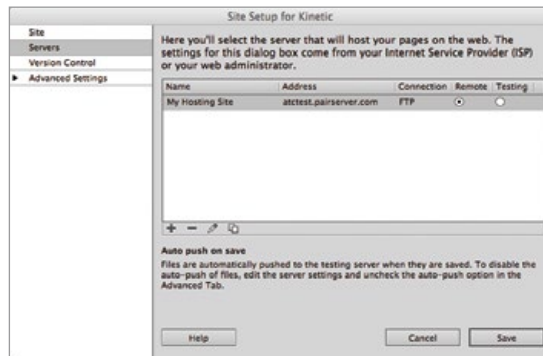
9. Make sure the Save check box (next to the Password field) is checked, and then click Test.

You must receive a message stating that Dreamweaver successfully connected to the Web server. If a connection with the Web server cannot be established, check your entries to make sure your Internet connection is active, and then try again.



(If you are working on a shared computer, you might want to uncheck the Save option. However, you will have to retype your username and password every time you upload files to your hosting account.)

10. Click Save to return to the Site Setup dialog box.



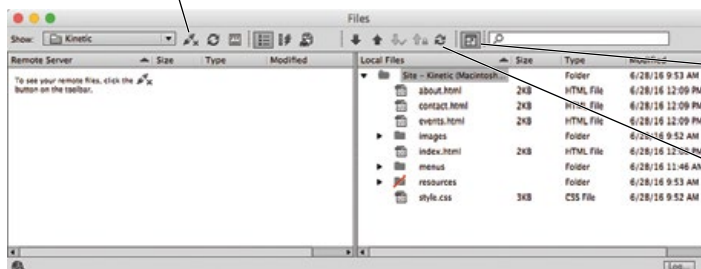
11. Click Save to close the Site Setup dialog box, then continue to the next exercise.

UPLOAD FILES TO A REMOTE SITE

Dreamweaver's FTP functionality makes it easy to put files into the remote site folder (defined in the Site Setup dialog box). You can even synchronize all files on the remote and local sites — which is useful when you are ready to publish the site for public Internet access.

1. With the Kinetic site open in the Files panel, click the Expand button in the Files panel to show both the local and remote sites.

Click here to connect to the remote site.

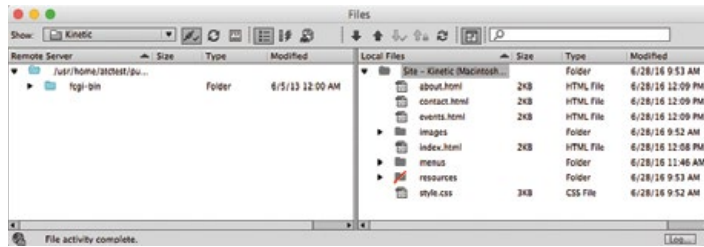


Click this button to toggle the panel between expanded and regular modes.

Click this button to synchronize the remote and local site folders.

2. Above the Remote Server pane, click the Connection button to link to and show the remote site.

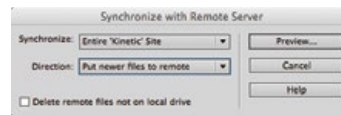
After the connection has been made, the remote site appears in the left pane of the Files panel. (Your host account might include a number of default files.)



3. Click the Synchronize button at the top of the expanded Files panel.

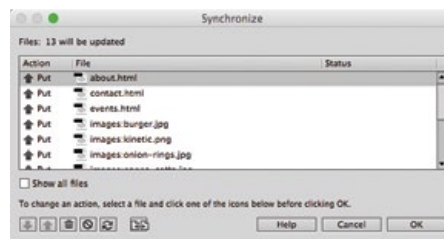
4. In the Synchronize with Remote Server dialog box, choose Entire 'Kinetic' Site in the Synchronize menu, and choose Put Newer Files to Remote in the Direction menu.

This utility enables you to synchronize an entire site or only selected files. You can also determine which version (local or remote) to synchronize from. For example, if you accidentally delete files from your local site folder, you can choose to synchronize files from the remote site to the local site to restore the missing files.



5. Click the Preview button.

After a few seconds, the Synchronize dialog box shows a list of all files that will be affected by the process. In this case, this is the first time you are uploading to the remote site, so all site files need to be put onto the remote site.



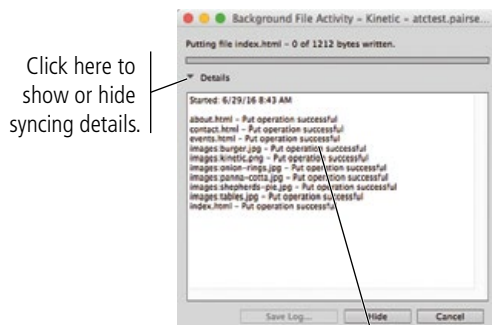
Note:

You can use the buttons at the bottom of the Synchronize dialog box to change the options for selected files in the list.

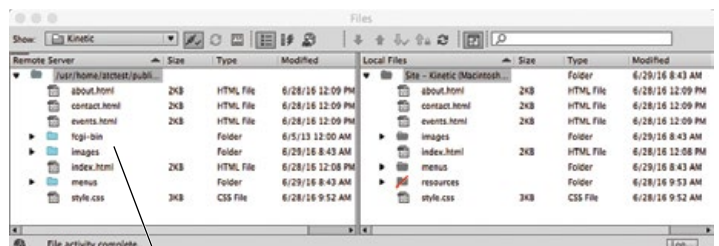
6. Click OK to put the files onto the remote site.

7. In the Background File Activity dialog box, click the arrow button to the left of the word "Details."

When you upload files to the remote server, Dreamweaver keeps a log of affected files. The Background File Activity dialog box shows a list of each file, including any potential problems encountered during the transfer process. Clicking the Details button expands the dialog box and shows the progression of the synchronization.

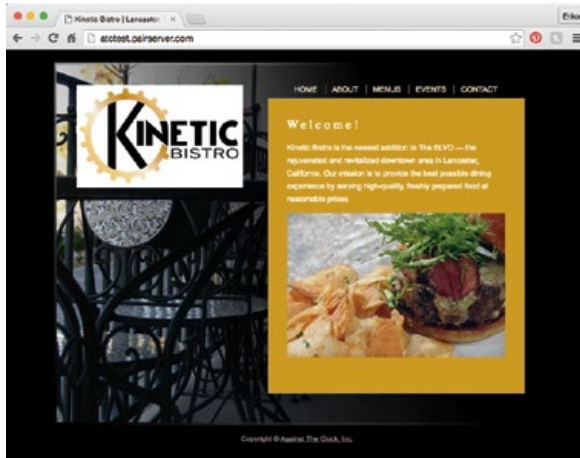


All files should show "Put Operation successful."

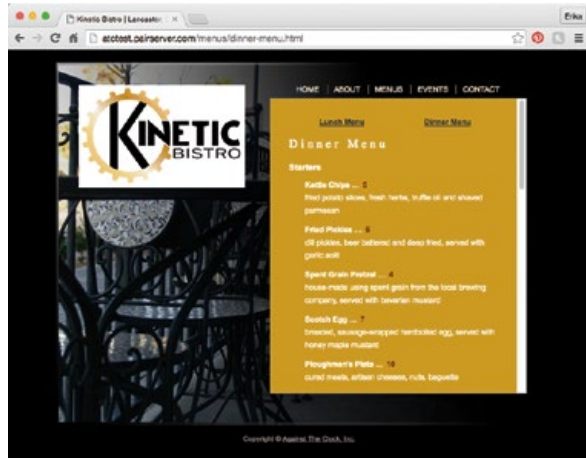
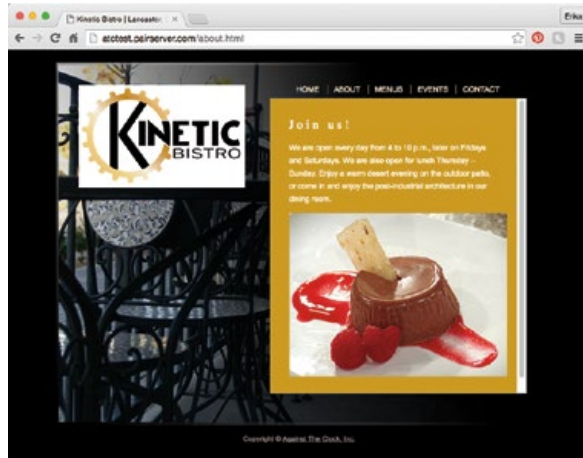


8. Open a browser window. In the navigation bar, type the URL of the Kinetic home page at your domain name.

Type the same Web URL you defined in the Servers section of the Site Setup dialog box (see Page 57, Step 8). In our example, the complete URL is `http://atctest.pairserver.com/`.



9. Test the various links in the site.



10. Close the browser and return to Dreamweaver, then continue to the next exercise.

EXPORT AND REMOVE THE SITE DEFINITION

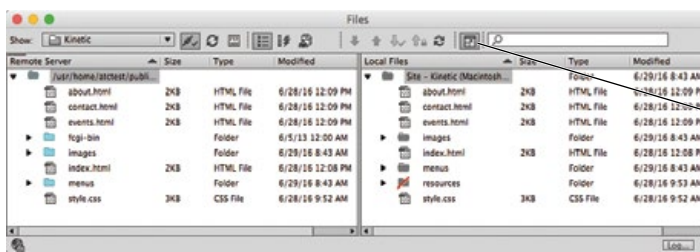
To reduce the potential for confusion, it's a good idea to remove the defined sites of completed projects, leaving only the defined sites of current projects.

As stated in the Interface chapter, removing a site from Dreamweaver does not delete the actual files and folders from your computer; it simply removes them from Dreamweaver. Rather than removing a site, however, you can export a site definition file — which you can later import to restore the same settings and options you already defined (as you did in the Interface chapter when you imported the sf-arts site).

As you work through the projects in this book, you will export and remove site definitions for completed projects, so your site list remains manageable. You should get into this habit so you can quickly reinstate site definitions if necessary.

1. With the Kinetic site open in the Files panel, click the Collapse button in the Files panel.

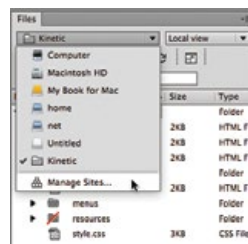
The Files panel retains the last-used position and mode; it can be a good idea to collapse it whenever you are not interacting with files on a server.



Click here to collapse the panel back to the standard mode.

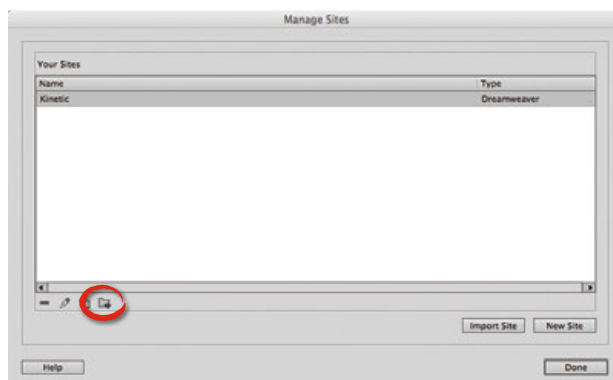
2. Choose Manage Sites at the bottom of the Directory menu.

You can access this menu even when the Files panel is in expanded mode.



3. In the Manage Sites dialog box, choose the Kinetic site name, and then click the Export button.

This function creates a “.ste” file that stores the Dreamweaver site definition settings.



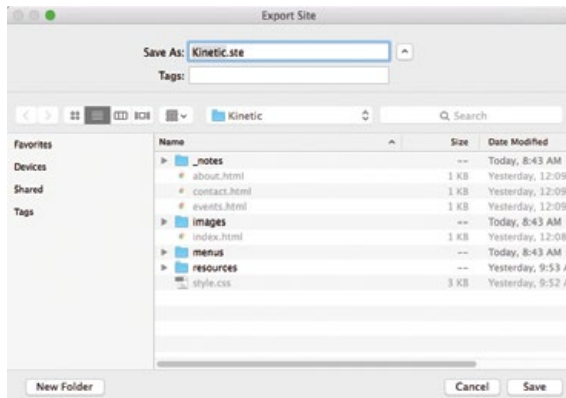
4. Read the resulting warning. Choose the option you prefer, then click OK.

If you are sharing site files with other users, you might want to exclude login and password information in the site setup. Each user should have his or her own password and login information.

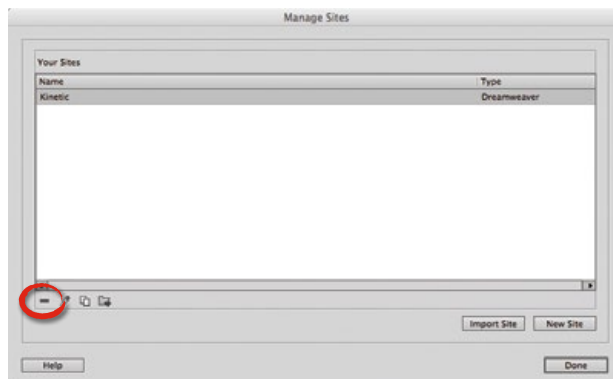


5. Navigate to WIP>Kinetic and click Save.

The Export Site dialog box defaults to the current site's root folder. You can restore the site settings by importing the site definition file from this location.



6. In the Manage Sites dialog box, make sure Kinetic site is selected and click the “-” button to remove the site from the list.



7. Click Yes to the warning to confirm the removal of the Kinetic site definition.



Remember, you are not deleting the files from the site; you are simply removing the site definition from Dreamweaver.

8. At the bottom of the Manage Sites dialog box, click Done.

Project Review

fill in the blank

1. The _____ extension identifies a Dreamweaver site definition file.
2. The _____ is the primary folder that contains all files and subfolders of a Web site.
3. The _____ is used to view and manage files that make up a site in Dreamweaver.
4. _____ is the process of improving a page's ranking in search engine results pages.
5. A(n) _____ is a path from one file to another, beginning from the current location and moving up or down through folder paths to the target image.
6. The notation _____ tells Dreamweaver to move up one folder from the current location.
7. The _____ shows the nested order of HTML tags to the currently selected object.
8. The _____ protocol is used to define an email link.
9. _____ is the process of hiding certain files in the site so they are not uploaded to the Web server.
10. The _____ pane of the Site Setup dialog box defines the settings you need to upload site files through Dreamweaver's Files panel.

short answer

1. Briefly explain why it is important to define a Dreamweaver site file.
2. Briefly explain the importance of creating a site flowchart.
3. Explain three different methods for creating a link to a page in the current site.

Project Summary

This project focused on two of the foundational elements of Web site design — organizing files and creating links. A well-organized site structure includes links that make it easy for users to navigate throughout the entire site. Dreamweaver makes it easy to manage the files in a site — renaming and moving them while maintaining the links between pages within the site. You also learned a number of ways to create links, whether to other pages in the site, to an external URL, or to an email address. The skills you used in this project will be required to complete virtually any site you create in Dreamweaver.

