

PROJECT 2

Page 87

The description of item F in the Swatches panel should refer to Page 314:

- F. **Add Selected Swatch to CC Library.** Clicking this button adds the selected swatch to the active CC Library (see Page 314 for more about CC Libraries).

PROJECT 3

Page 146

The instruction to click Don't Update Links should come at the beginning of Step 5 because, if a Profile or Policy Mismatch warning shows, it appears after closing the warning *about* missing/modified links and *before* the warning about missing fonts.

Although the explanations remain the same, the steps should read:

5. **Click Don't Update Links. If you get a Profile or Policy Mismatch warning, Click OK.**
6. **Review the information in the Missing Fonts dialog box.**

PROJECT 4

Page 281-282

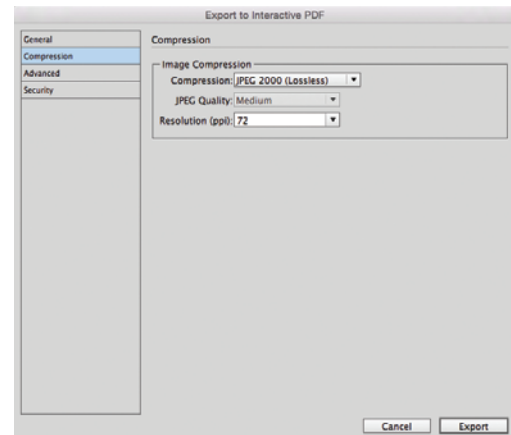
The Export to Interactive PDF dialog box was changed since the first release of InDesign 2015.4. The compression options are now available in a separate window from the general options. Due to this change, Step 10 (Page 282) should now be broken into separate steps:

10. **Define the following settings in the General pane:**
 - **Make sure the All [Pages] radio button is selected.**
 - **Choose the Spreads radio button.**
 - **Choose Fit Height in the View menu.**
 - **Choose Single Page in the Layout menu.**
 - **Check the Open in Full Screen Mode option.**
 - **Leave the Flip Pages Every option unchecked.**
 - **Choose From Document in the Page Transitions menu.**
 - **Check the View After Exporting option.**
 - **Check the Embed Page Thumbnails option.**

Updates & Errata

11. Click **Compression** in the list of options on the left, then review the available settings.

- **Compression** determines how images in the resulting PDF are managed to reduce file size for digital distribution. JPEG (Lossy) removes data, and can result in poor image quality. JPEG 2000 (Lossless) reduces file size without discarding image data, but can result in larger file size than JPEG (Lossy). Automatic allows the software to determine the best quality for images.
- **JPEG Quality** defines how much compression is applied if you choose JPEG (Lossy) or Automatic compression. Higher quality settings result in larger files.
- **Resolution** defines the resolution of raster images in the exported PDF. High resolution is important if you want users to be able to zoom in close to an image, but higher resolution settings mean larger file sizes.



12. Define the following settings in the General pane:

- Choose **JPEG 2000 (Lossless)** in the Compression menu.
- Define the target Resolution as **72 ppi**.

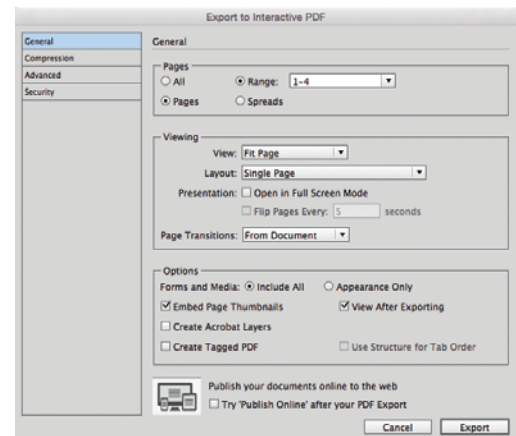
PROJECT 6

Page 398, Step 3

The Export to Interactive PDF dialog box was changed since the first release of InDesign 2015.4. The compression options are now available in a separate window from the general options. Due to this change, Step 3 on Page 398 should now be broken into two separate steps:

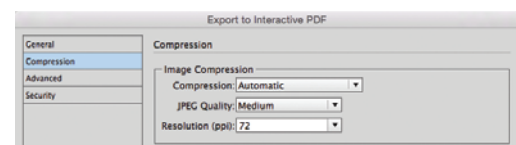
3. In the Export to Interactive PDF dialog box, make the following choices in the General pane:

- Choose the **Pages** option.
- Type **1-4** in the Range field.
Remember, you added a fifth page to contain the table of contents that you want to function as bookmarks in the resulting PDF file. By exporting the specific page range, you exclude the unwanted page from the final file.
- Choose **Fit Page** in the View menu.
- Uncheck the **Open in Full Screen Mode** option.
- Make sure **Include All** is selected in the **Forms and Media** option.
- Check the **View After Exporting** option.



4. Make the following choices in the Compression pane:

- Choose **Automatic** in the Compression menu.
- Choose **72** in the Resolution (ppi) menu.



Updates & Errata

Page 418, Step 6

The step incorrectly identifies the file that should be placed. The step should read:

- 6. Choose File>Place. Select 2-deli.jpg (in the WIP>Lancaster>Slides folder). Make sure the Replace Selected Item option is checked, then click Open.**

Page 419, Step 11

The step incorrectly identifies the file that should be placed. The step should read:

- 11. Choose File>Place. Select 3-market.jpg, make sure Replace Selected Item is active, and click Open.**