

Updates & Errata

INTERFACE PROJECT

Page 6, Step 3

In the 2017.1 release (March 2017), the Color Themes panel has been removed from the default Essentials workspace. The Swatches panel is now the third button from the top in the panel dock.

Because of this change, Step 3 should read:

- 3. In the panel dock, click the third button from the top (Swatches).**

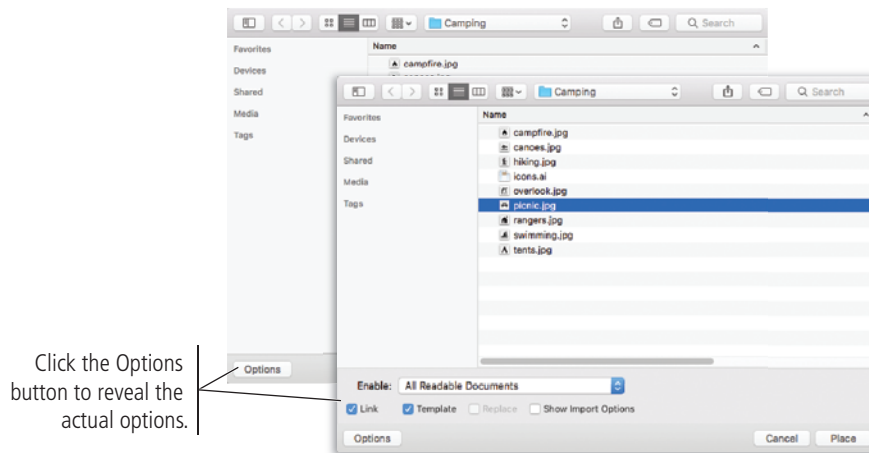
PROJECT 1

Page 47, Step 2

For Macintosh users on system 10.11 (El Capitan) or later, the Place dialog box in version 2017.1 now includes an Options button near the bottom, which you must first click to access the placement options as described in the text.

Because of this change, the following step should be added before the existing Step 2:

- 2a. Click the Options button at the bottom of the Place dialog box.**



Page 48, Step 4

Because of the dialog box configuration change in the 2017.1 release, the step should read:

- 4. Choose File>Place a second time, and click the Options button at the bottom of the dialog box. Select hiking.jpg in the list, check the Template option, and click Place.**

PROJECT 2

Page 90, Step 7

Because of the dialog box configuration change in the 2017.1 release, the step should read:

Updates & Errata

7. Choose File>Place and click the Options button at the bottom of the dialog box. Navigate to the file `sketch.jpg` in your WIP>Regatta folder. Check the Link and Template options at the bottom of the dialog box, and then click Place.

PROJECT 3

Page 132, Step 7

Because of the dialog box configuration change in the 2017.1 release, the step should read:

7. Choose File>Place and click the Options button at the bottom of the dialog box. Navigate to `lemon.jpg` in your WIP>Cafe folder. Make sure the Template option is checked, and click Place.

Page 166, Step 3

Because of the dialog box configuration change in the 2017.1 release, the step should read:

3. Choose File>Place and click the Options button at the bottom of the dialog box. Navigate to the file `cafe-logo.ai` in your WIP>Cafe folder, and make sure Link and Template are both unchecked. Check the Show Import Options box, then click Place.

Page 169, Step 12

There is no need to click the Options button in the dialog box to complete this step. However, you would need to do so in order to verify the explanation following the step — the dialog box still does remember the last-used setting for Show Import Options, even if you do not choose to show the options in the Place dialog box.

PROJECT 5

Page 251, Step 6

Because of the dialog box configuration change in the 2017.1 release, the step should read:

6. At the bottom of the dialog box, click the Options button. Check the Link and Show Import Options, then click Place.

Page 254, Step 17

Because of the dialog box configuration change in the 2017.1 release, the step should read:

17. Press Command/Control, then click to select `bridge_screened.jpg`, `sfaa.ai`, and `sftt.ai`. Click the Options button at the bottom of the dialog box. With the Link option still checked, uncheck the Show Import Options box and then click Place.

PROJECT 6

Page 294, Step 4

Because of the dialog box configuration change in the 2017.1 release, the step should read:

Updates & Errata

4. Choose File>Place and click the Options button at the bottom of the dialog box. Select the file **background.tif** in your WIP>Candy folder; make sure none of the options at the bottom of the dialog box are checked, then click Place.

Page 314, Step 9

Because of the dialog box configuration change in the 2017.1 release, the step should read:

9. Choose File>Place and click the Options button at the bottom of the dialog box. Select **anniversary75.psd** (in your WIP>Candy folder). Make sure **Link** is not checked and **Show Import Options** is checked, then click Place.

Page 334, Step 2

Because of the dialog box configuration change in the 2017.1 release, the step should read:

2. Choose File>Place and click the Options button at the bottom of the dialog box. Navigate to your WIP>Candy>side-panels folder. Select all six images in the folder. Make sure none of the options at the bottom of the box are checked, then click Place.